



# Joint Programming Initiative Urban Europe

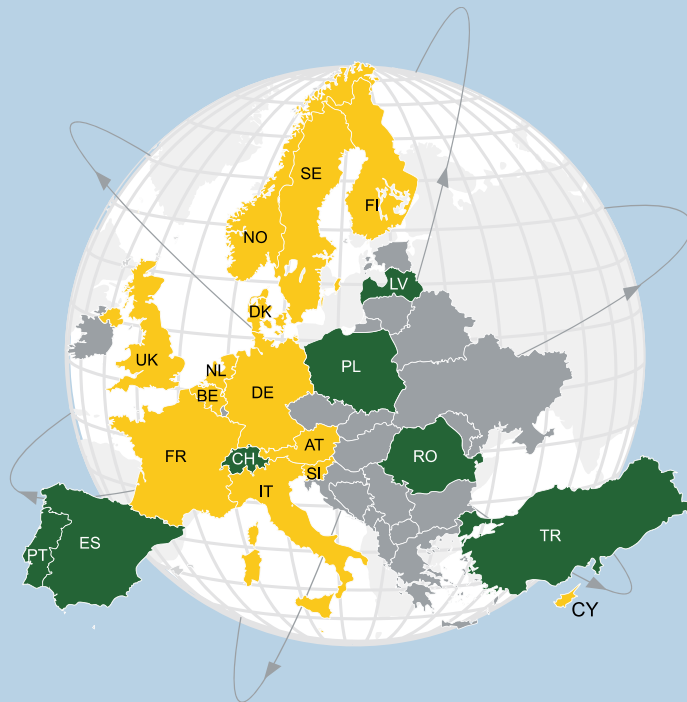
Strengthen research and innovation in the field on urban transitions towards sustainable urban futures



# Joint Programming Initiative Urban Europe

## European and worldwide outreach

-  Core members
-  Observers & occasional co-funders of joint calls



# 20

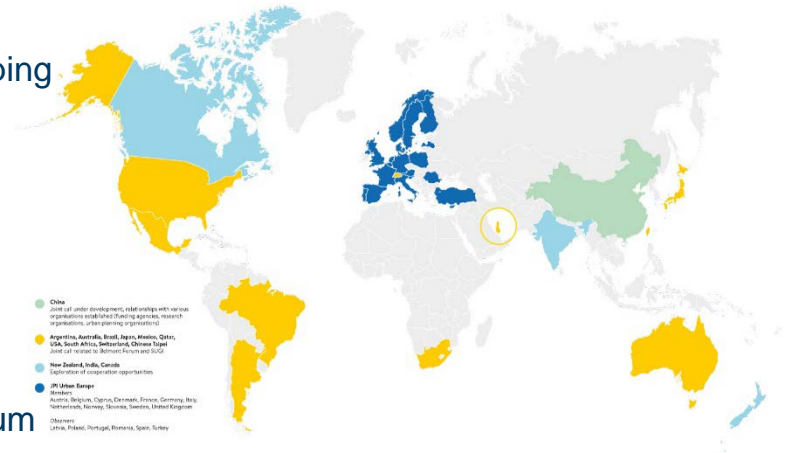
European countries  
participating and contributing

# 13

Core members

# JPI Urban Europe

- Annual calls since 2012, portfolio of 52 projects
- 20+ funding agencies implementing calls, improving framework conditions and developing new instruments
- 25 RTO cooperating in the Urban Europe Research Alliance
- The JPI UE Stakeholder Platform, building upon SEiSMiC
- International collaboration with Belmont Forum and China
- Conferences, workshops as places for valorisation and exchange, contribution to EIP SCC

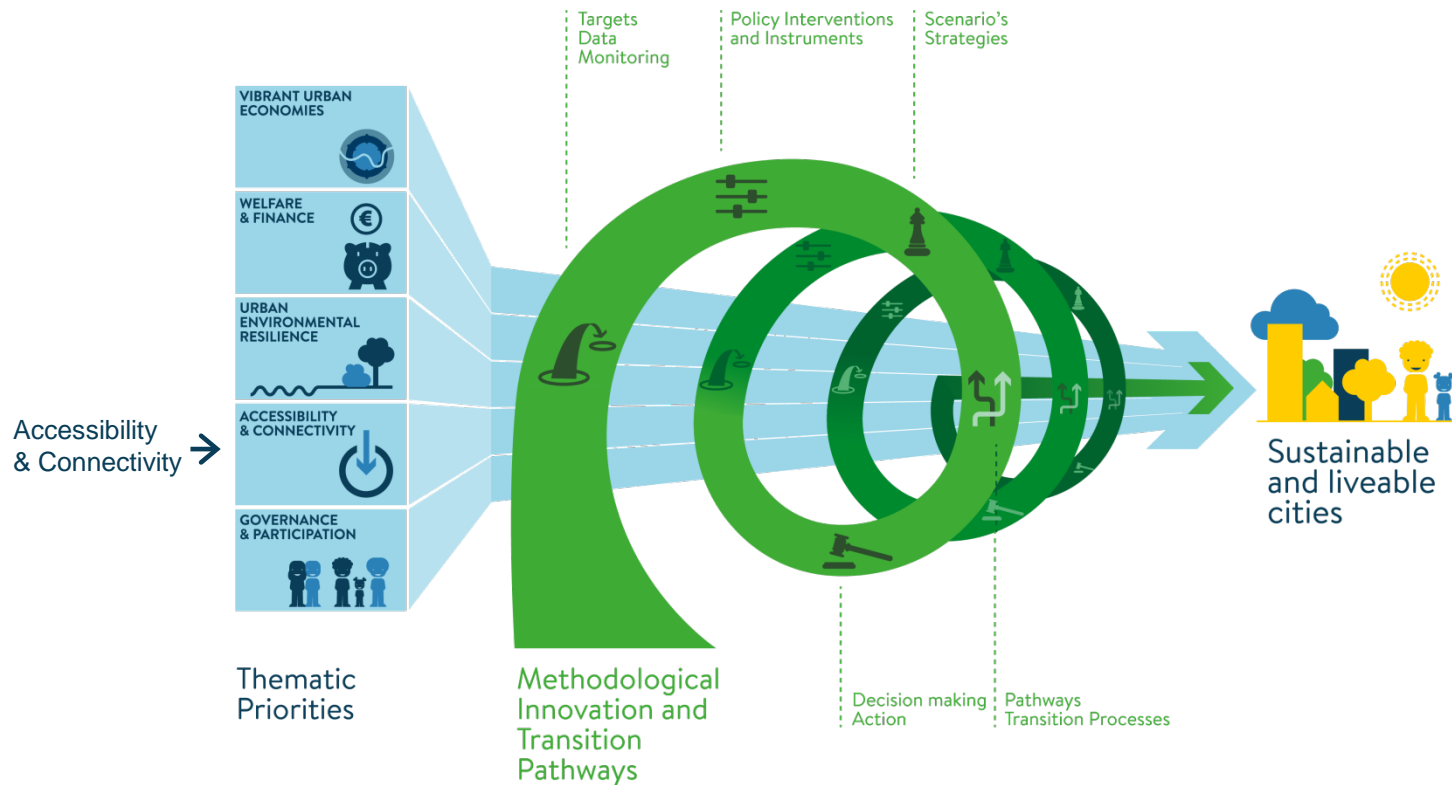


## JPI Urban Europe in one sentence.

---

*“JPI Urban Europe’s SRIA responds to the urgent need for ambitious, sustained and truly **inter-** and **transdisciplinary** research to radically improve our understanding of how socially, economically and environmentally sustainable our urban areas are; and to support **Europe’s cities** in their transition towards a future that maximises their **sustainability, resilience** and their **liveability** in this era of **global competition** for commerce, industry, tourism, labour and investment; to drive **urban innovation** and technologies.”*

# Research & Innovation agenda



## R&I for Urban Transitions

---

*“Not only doing the right research  
but doing the research right!!”*

Sheila Jasanoff, Lund Conference

- How to foster co-creation of knowledge?
- How to mobilise stakeholders and societal actors in R&I?
- How to strengthen exploitation of research results beyond pilots?
- How to build capacities in public services and society?

---

# JPI Urban Europe

Transition towards sustainable and livable urban futures

***Colette Bos***

***JPI Urban Europe***

*Management Board Member*

c.bos@nwo.nl