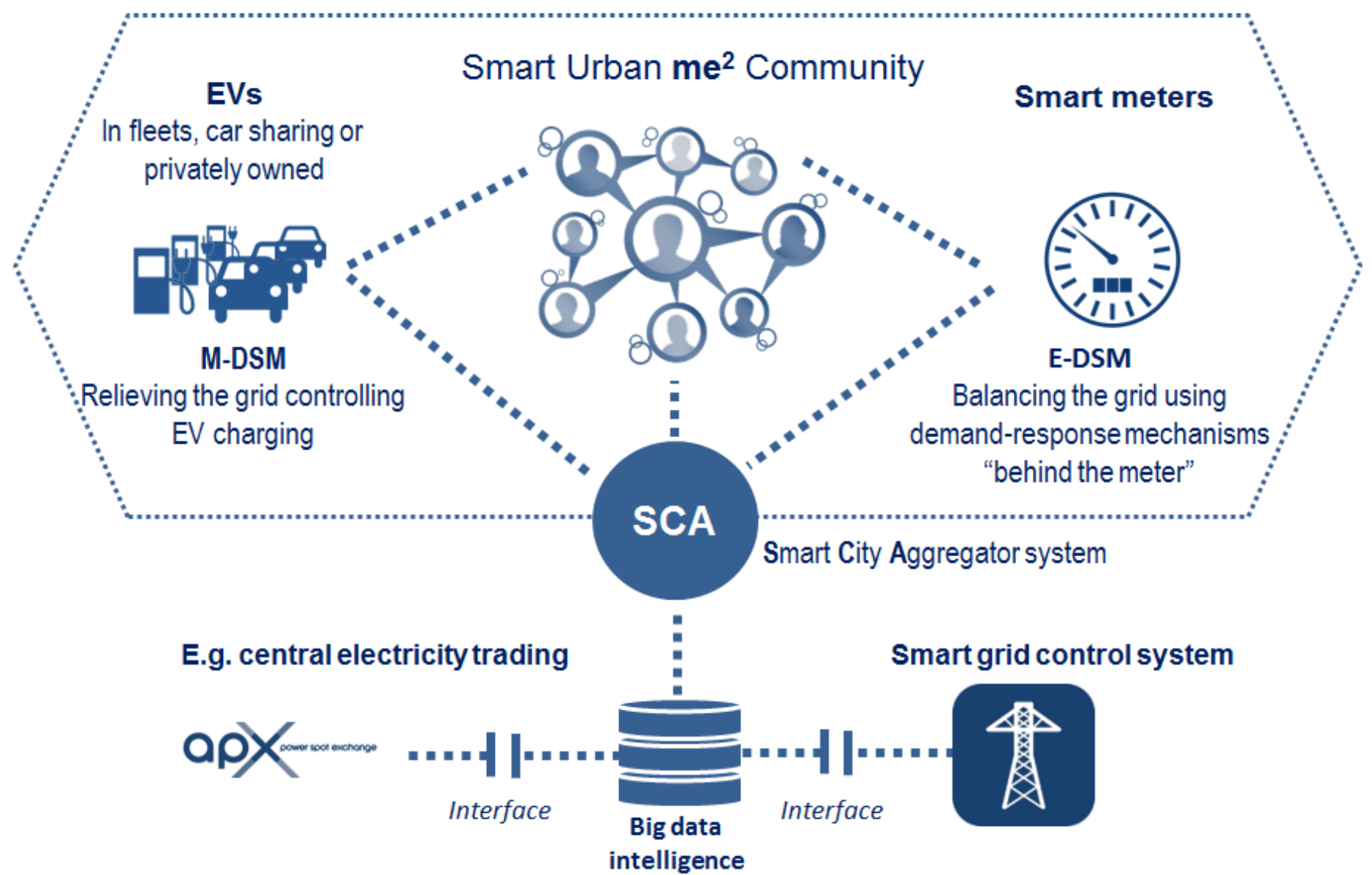


me²

Electricity and electric mobility are getting closer together on a local level. me² (mobility + electricity = synergy) is a platform that connects citizens of local communities, helping them to be more aware of their energy consumption, incentivizing changes in their individual and collective behaviour and helping them to save electricity costs while being engaged with a local community.

The me² platform, which will be piloted and demonstrated in Lisbon and Amsterdam, can be employed by various actors, such as utilities, EV fleet operators or municipalities, enabling them to control user behaviour in order to make the electric grid more efficient and reliable.



Aim/objective

- Integration of e-mobility and electricity behavior in a community setting
- A tested, validated and operational Smart City Aggregator platform
- Mechanisms to influence behavior
- A B2B market place

Approaches/methods

- Consumer analysis
- Simulations of charging data
- Prediction algorithms
- Gamification elements

Expected results and impacts

- More balanced local grids
- Lowered average energy costs for consumers
- A policy recommendation set for local and national agencies
- A viable business model, including a positive business case and an enticing value proposition

Involved cities/project examples

- Amsterdam, using an open-community
- Lisbon, using a closed-community

me² – Integrated smart city mobility and energy platform
Duration: 2016–2018
Internet: www.jpi-urbaneurope.eu/me2
Contact: Dr. Robert van den Hoed, Amsterdam University of Applied Sciences
E-mail: r.van.den.hoed@hva.nl
Budget: 862.880 EUR
Partners: Amsterdam University of Applied Sciences, UCP Católica Lisbon School of Business & Economics, Lisboa E-NOVA, Agência Municipal De Energia-Ambiente De Lisboa, MOOSMOAR Energies, Virtual Power Solutions, MediaPrimer

About JPI Urban Europe

JPI Urban Europe is a transnational research and innovation programme on urban transition. With the ambition to develop and validate new solutions for sustainable and liveable cities, a cooperation platform and programme is provided to connect urban stakeholders, researchers, cities, business and society

www.jpi-urbaneurope.eu @jpiurbaneurope

