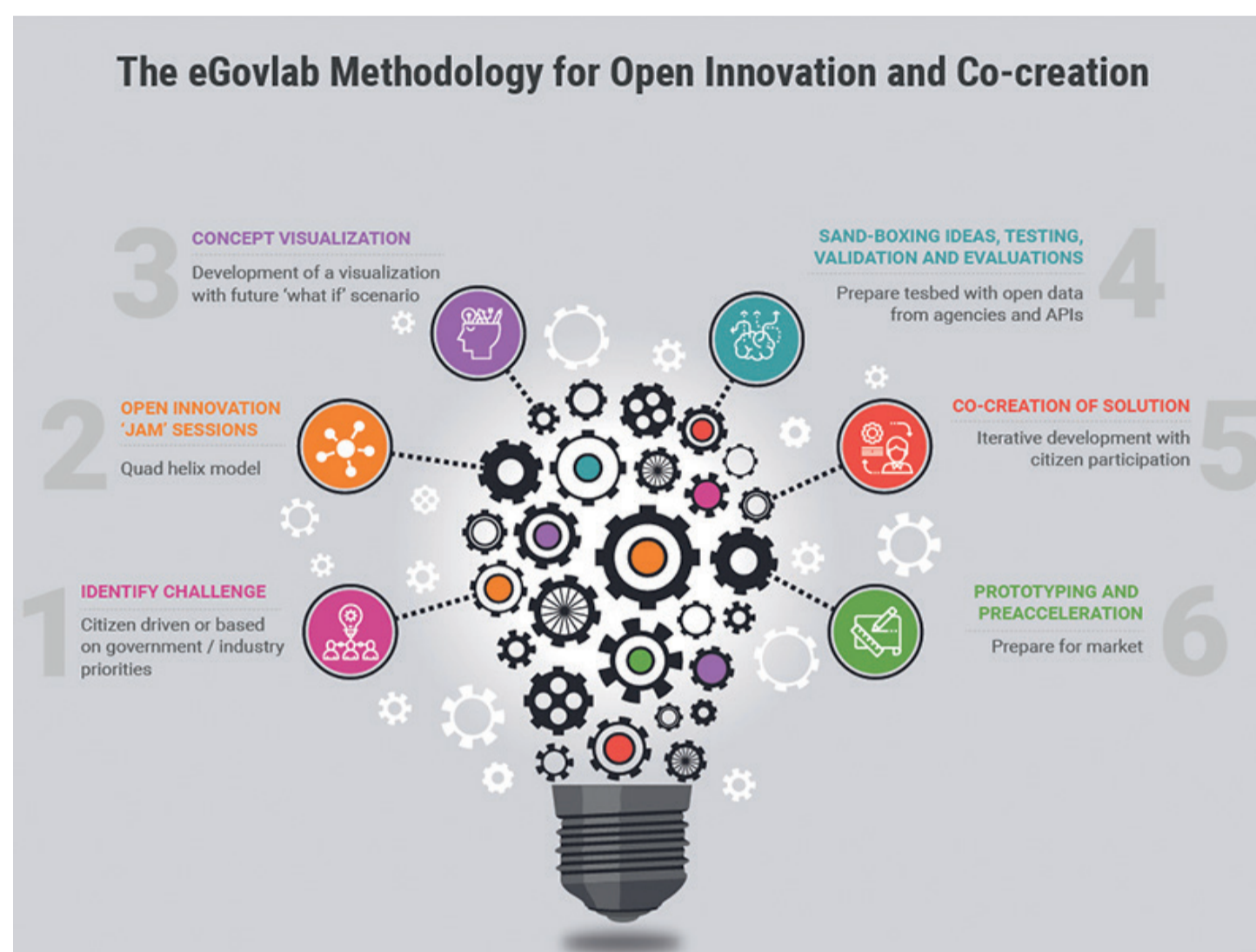


InSight & EnLIGHT

The planning of decision-making processes in local or regional governments involve both the intentions and objectives of the government itself, as well as unknown and intertwined objectives of the set of stakeholders who are directly or indirectly affected by proposed future directions. Current ways of accommodating for citizen's and stakeholder's inputs to the planning process are both time consuming and difficult for the city's decision makers to incorporate in the decision process.



Aim/objective

- Examining the current planning process at the City of Stockholm.
- Involve Core stakeholders; Market forces and Enabling environment to express their view in order to participate in the planning process.
- Design tools to enable effective and rational transparent process to achieve an informed decision.

Approaches/methods

This project will use a co-creation methodology in order to facilitate the open and collaborative innovation.

The concept of co-creation is different from the traditional push and pull approaches, as it actually implies that different parties actually 'create' something together, instead of one part developing something for the other to use (push-approach), or expressing a clear request or need to the other (pull-approach).

Expected results and impacts

- Access informants in an attractive and scalable way.
- Collect and aggregate insights together with underlying values and beliefs from stakeholders, interest groups, and experts.
- Evaluate actions or plans focussing on how different stakeholders are affected and how the actions provide value.
- Allow stakeholders to fully transparently view the entire process from survey to aggregated results and decisions.

InSIGHT & EnLIGHT - Digital Citizen participation and transparent decisions

Duration: 2018-2021

Internet: InformEnlight.preference.nu

Contact Europe: Kjell Bjorking, Preference AB

E-mail: kjell@preference.nu

Budget: 41.630 €

Partners: Stockholm University, City of Stockholm, Allies AB, IIBW – Institut für Immobilien, Bauen und Wohnen GmbH

Involved cities

- Stockholm

