

# Metabolic

## Green Urban Centers of Tomorrow

- **Food, Water and Energy (FWE):**

Essential nutrients of growing urban centers, as a complex supply-chain network, to sustain vibrant operation & healthy urban metabolism

- **Objectives:** To investigate urban metabolism from FWE Nexus aspect
  - ◆ Incorporate advanced tools/models into scientific collaboration framework
  - ◆ Propose governance strategies
  - ◆ Develop an international FWE Nexus capacity building system

- **Potential Solutions:**



- **Methods:**

Identify critical FWE factors & delivery pathways to urban centers via AI, datamining, system dynamics, LCA, agro-logistics and scenario analysis

- **Expected Results & Impacts:**

- ◆ Develop optimal reallocation schemes, management strategies and solutions at FWE Nexus level
- ◆ Propose virtual resource center for transdisciplinary training to share

# Metabolic



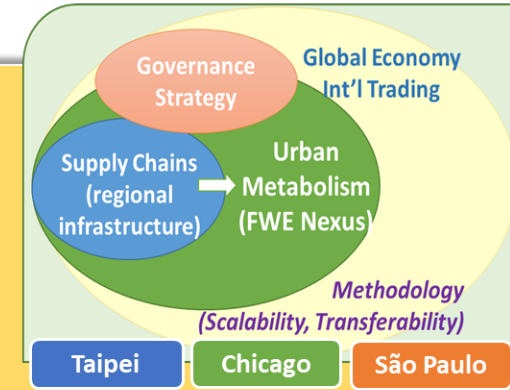
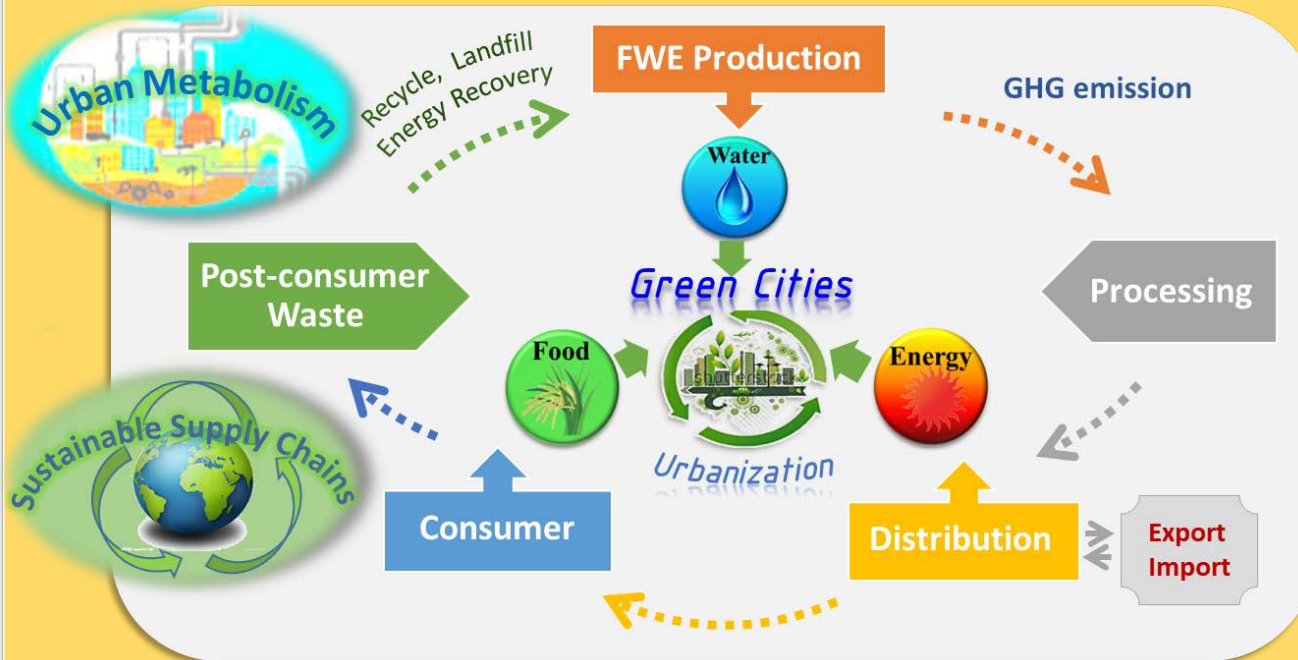
國立臺灣大學  
National Taiwan University



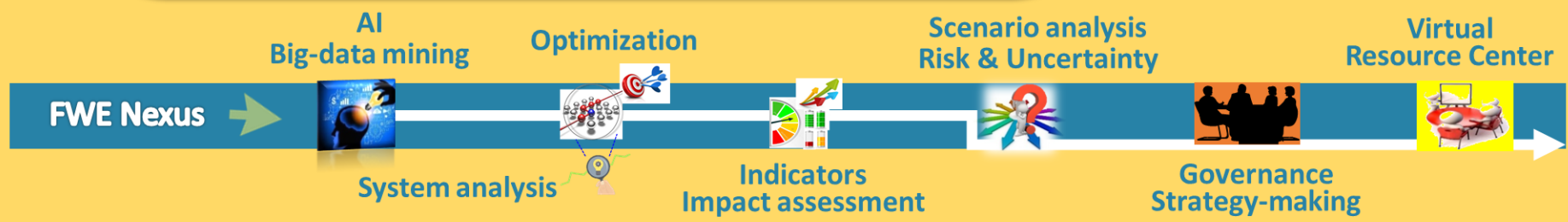
ILLINOIS



## Intelligent Urban Metabolic Systems for Green Cities of Tomorrow



- Governance strategies
- Incentive programs
- Decision-maker dialogs
- Stakeholder meetings





國立臺灣大學  
National Taiwan University



# Contact

**PI**

**Distinguished Professor Fi-John Chang**

National Taiwan University (NTU)

[changfj@ntu.edu.tw](mailto:changfj@ntu.edu.tw)

**Associate Professor Luis F. Rodríguez**

University of Illinois at Urbana-Champaign,  
Urbana, IL (UIUC)

[lfr@illinois.edu](mailto:lfr@illinois.edu)

**Professor Makoto Taniguchi**

Research Institute for Humanity and Nature  
(RIHN)

[makoto@chikyu.ac.jp](mailto:makoto@chikyu.ac.jp)

**Professor José Vicente Caixeta Filho**

University of São Paulo - Escola Superior de  
Agricultura Luiz de Queiroz (ESALQ/USP)

[jose.caixeta@usp.br](mailto:jose.caixeta@usp.br)

**CEO Kuei-Kuang Chen**

Sunny Rich Power Co., Ltd.

[KK.Chen@wsg-group.com](mailto:KK.Chen@wsg-group.com)