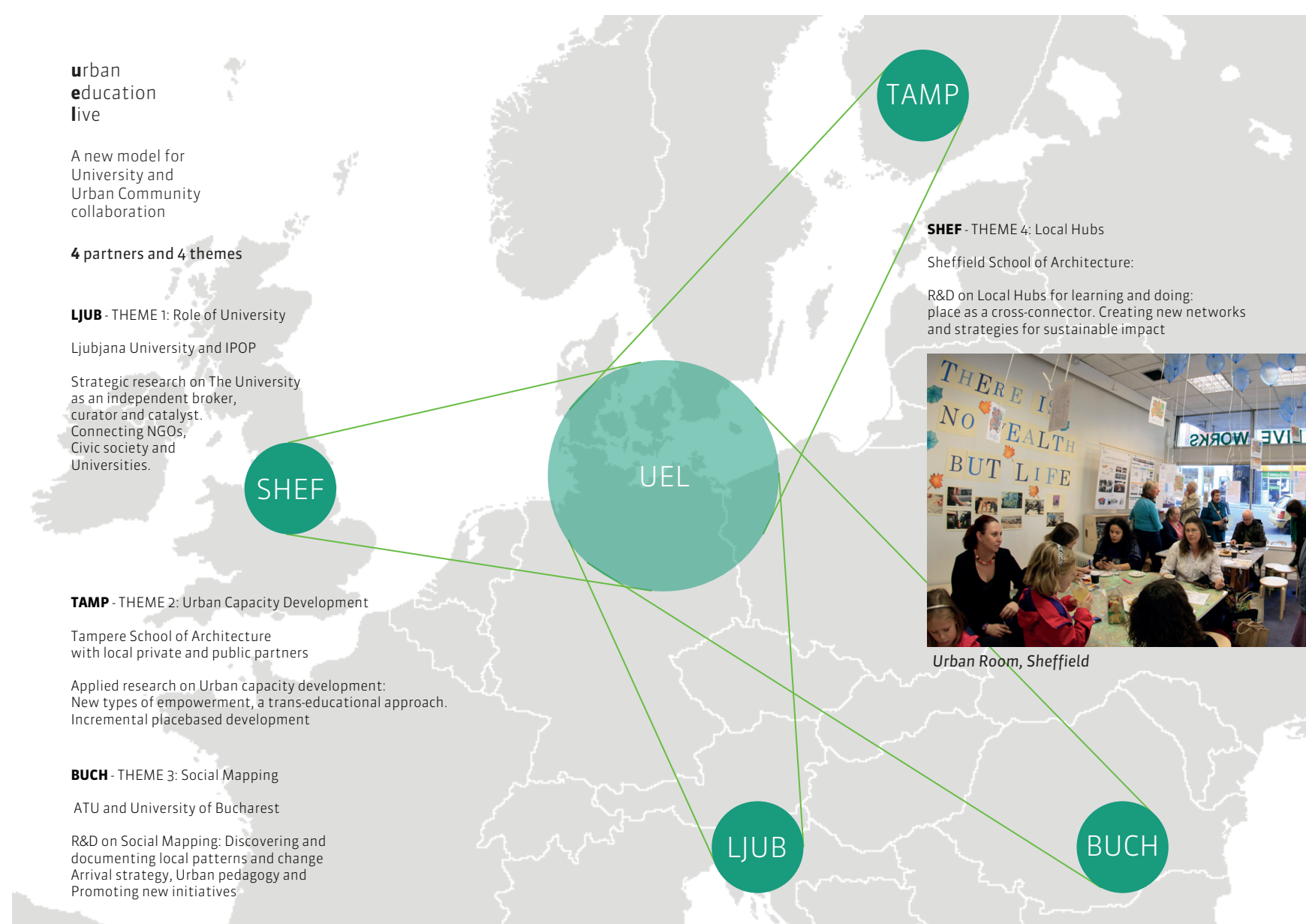


Urban Education Live

Urban Education Live (UEL) will create and test a new model of collaboration between universities and urban communities. In this model, universities act as catalysts of urban change through trans-educational urban capacity building. Both local communities and the learning process of students will benefit.

Social Mapping will build a local agenda with a high sensitivity to situated knowledge. UEL establishes Local Hubs for learning and doing that create new networks and foster local innovative ecologies. The project will develop a flexible set of methods, technologies and theory that makes it possible to test and implement the model on a larger scale.



Aim/objective

Drawing on earlier lessons learned, UEL develops a set of innovative approaches for inclusive, vibrant and accessible urban communities that involve a renewed role of educational institutions.

Approaches/methods

Trans-educational urban capacity building refers to several disciplines and levels of education and introduce a number of “live learning” pedagogies that focus on collaboration, organization and innovation.

Expected results and impacts

Besides thriving Local Hubs in the partner cities we expect to develop a broader network of actors working on different models for collaboration between Universities and urban communities such as the Pratt Center, New York.

Involved cities

- Ljubljana University and IPOP
- Role of University
- Tampere School of Architecture
- Urban Capacity Development
- Sheffield School of Architecture
- Local Hubs
- ATU and Ion Mincu University, Bucharest
- Social Mapping

Urban Education Live
– Innovative urban education in live settings – local presence and mapping technology as tools for urban capacity building and innovation

Duration: 2017–2019

Internet: urbedu.live

Contact: Prof. Dr. Panu Lehtovuori, Tampere University of Technology

E-mail: panu.lehtovuori@tut.fi

Budget: 1.600.000 EUR

Partners: Tampere University of Technology, The University of Sheffield, University of Ljubljana, Urban Transition Association (ATU)

About JPI Urban Europe

JPI Urban Europe is a transnational research and innovation programme on urban transition. With the ambition to develop and validate new solutions for sustainable and liveable cities, a cooperation platform and programme is provided to connect urban stakeholders, researchers, cities, business and society

www.jpi-urbaneurope.eu

[@jpiurbaneurope](https://twitter.com/jpiurbaneurope)



This project has received funding from the European Union's Horizon 2020 research and innovation programme under grant agreement No 693443

