

CRUNCH

Climate - Resilient - Urban - Nexus - Choices

20 partners from 6 countries



Urban Living Labs

Southend-on-Sea, UK

Glasgow, UK

Eindhoven, NL

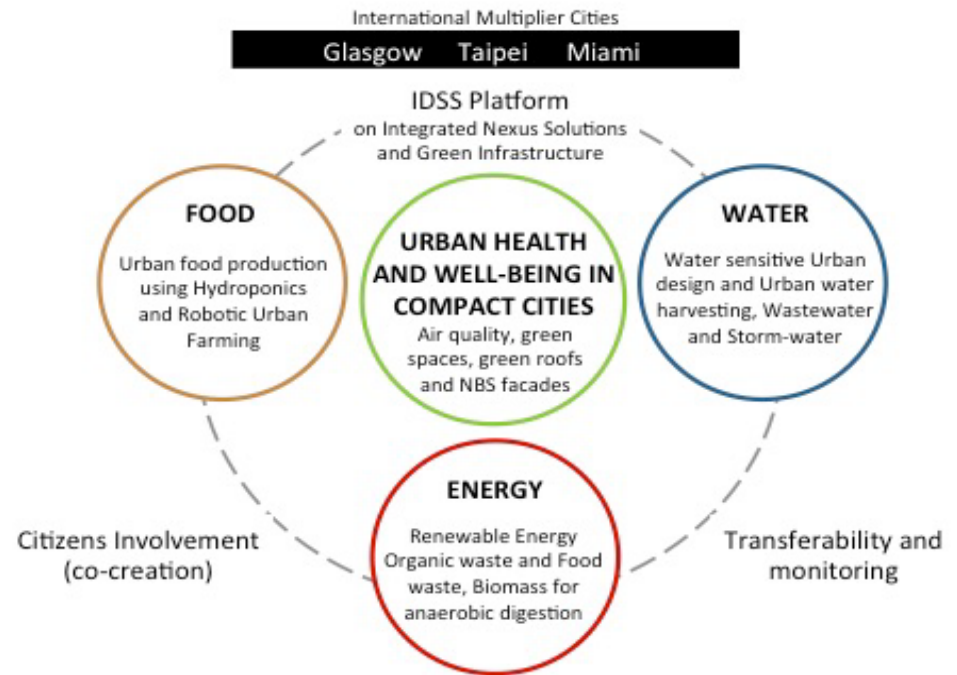
Gdansk, Poland

Uppsala, Sweden

Miami, USA

Taipei, Taiwan

www.fwe-nexus.eu



Southend-on-Sea (UK) Eindhoven (NL) Gdansk (POL) Uppsala (SWD)

Urban Living Labs to be developed, based on principles of the Circular Economy.

Aims

CRUNCH has an integrated approach to facilitate decision-making for cities

The aims of CRUNCH are:

1. CRUNCH will demonstrate how the Food-Water-Energy Nexus can strengthen urban resilience and resource efficiency of the participating cities.
2. Creating an interconnected knowledge platform with cross-sectorial indicators for a support tool and assessment framework (the Integrated Decision Support System - IDSS).
3. The guiding tool will improve and support robust decision-making on future urban development.

