



Sustainable Urbanisation Global Initiative (SUGI)

FOOD - WATER - ENERGY NEXUS



Sustainable Urbanisation
Global Initiative (SUGI)

FOOD - WATER - ENERGY NEXUS

BELMONT
FORUM

URBAN EUROPE



SUGI – Background

1. Starting point – identifying the need

Based upon a proposal from Future Earth, the Food-Energy-Water Nexus was identified

2. First step - a Scoping Workshop in Boulder in 2015, CO (US)

Participants from the Belmont Forum, JPI-Urban Europe program, the European Commission as well as international scientific community and stakeholders

Defined the scope of the call by identifying solution-oriented priority areas as well as research topics (identified 7 questions, later distilled in 3 themes) that would be best addressed through international collaboration

3. Decision and Take-off

The inception of the collaboration between Belmont Forum and JPI-Urban Europe, including a joint call secretariat

WHO we are and Budget

- ▶ 26 Funding Agencies 20 Countries + All African PIs

- ▶ **JPI Urban Europe**

- ▶ MINCYT (Argentina), FFG and BMVIT (Austria), FWO (Belgium), IRSIB (Belgium), RPF (Cyprus), JUELICH and BMBF (Germany), ANR (France), VIAA (Latvia), NWO (Netherlands), RCN (Norway), NCN (Poland), UEFISCDI (Romania), Formas (Sweden), SWEA (Sweden), ARRS (Slovenia), TUBITAK (Turkey), AHRC (UK), ERSC (UK), Innovate UK (UK)

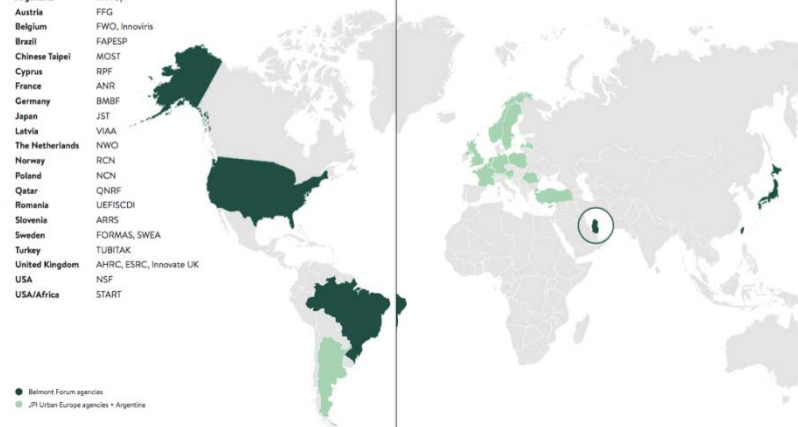
- ▶ **Belmont Forum**

- ▶ FAPESP (Brasil), JST (Japan), QNRF (Qatar), MOST (Chinese Taiwan), NSF (US), START (all AFRICAN PIs)

National funding agencies

Argentina	MINCYT
Austria	FFG
Belgium	FWO, Innoviris
Brazil	FAPESP
Chinese Taipei	MOST
Cyprus	RPF
France	ANR
Germany	BMBF
Japan	JST
Latvia	VIAA
The Netherlands	NWO
Norway	RCN
Poland	NCN
Qatar	QNRF
Romania	UEFISCDI
Slovenia	ARRS
Sweden	FORMAS, SWEA
Turkey	TUBITAK
United Kingdom	AHRC, ESRC, Innovate UK
USA	NSF
USA/Africa	START

● Belmont Forum agencies
● JPI Urban Europe agencies + Argentina



TOTAL Budget, including EC top up, ca 40 M€

Timescale



- **Starting Phase**

Grant signature, admin issues, KOM and setting up of projects pages on SUGI website

- **Mid term phase**

The call secretariat will request annual progress reports that an expert committee gives feedback on. The expert committee invites coordinators to meetings twice a year. Monitoring Activities

- **Final Phase**

Projects to be involved in dedicated activities to implement and exploit results and outcomes. A final report to be delivered to the call secretariat.

Other Activities

Funding contracts

The funding contracts are established by the project coordinator and project partners with their respective national/regional funding agencies.

Consortium Agreement

A Consortium Agreement (CA) is obligatory for all projects. We recommend using as an example the DESCA model CA. Please note that the DESCA model CA is foreseen for H2020 projects with the EC as the only funder. Thus, several of the paragraphs have to be adapted as the SUGI consortia have different funding agencies for the respective project parts carried out in the different countries.

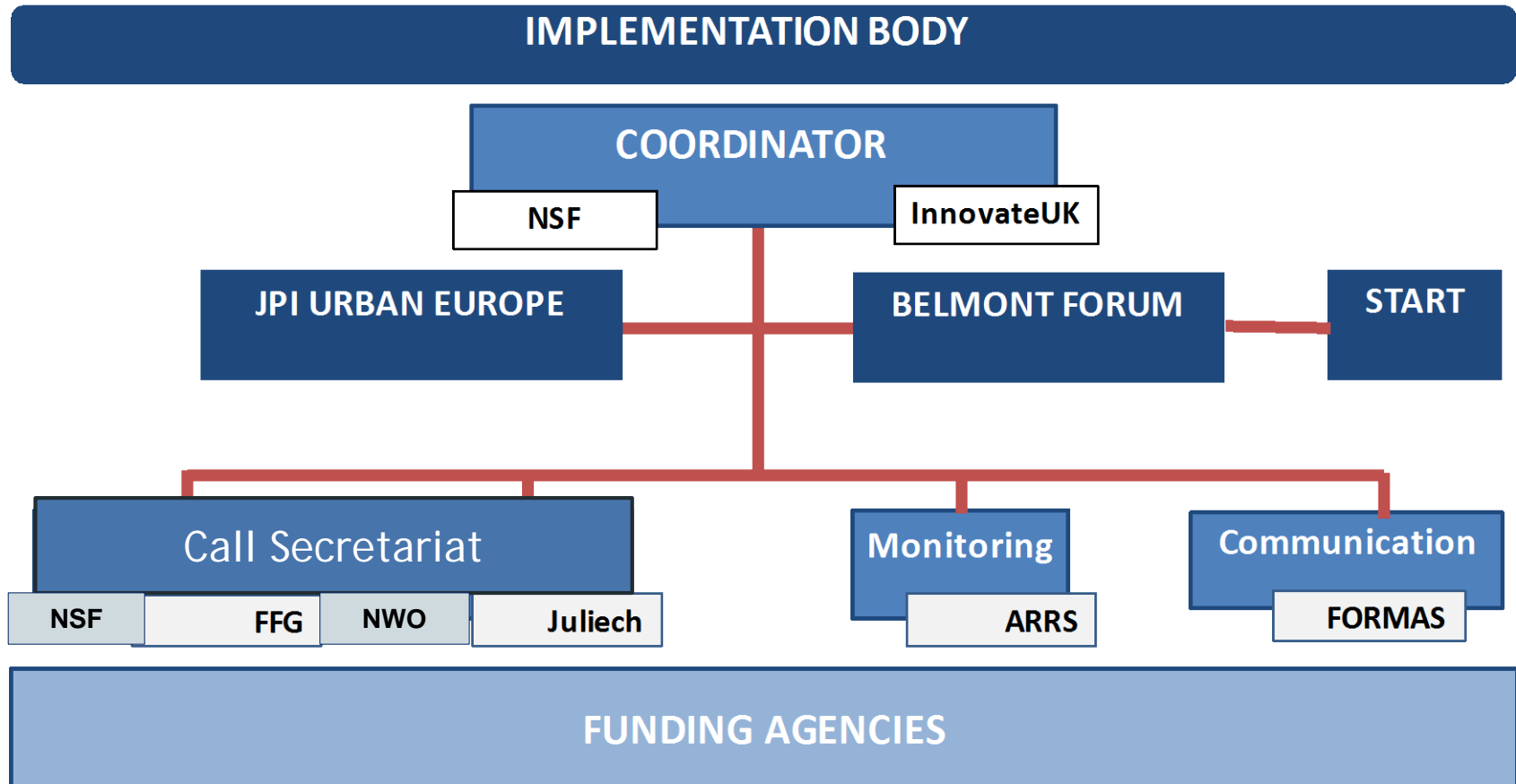
Data management

Data management plans are obligatory in the SUGI call. In the case this is relevant you can receive valuable information at the European Commission website.

Annual progress reports

Projects are expected to deliver annual transnational progress reports to the call secretariat, after 12 months, 24 months and 36 months (depending on the projects duration).

Implementation Team



Follow and join the SUGI-FWE call

www.sugi-nexus.org

- **LinkedIn**
 - Join group: <https://www.linkedin.com/groups/13400483>
 - Invite others to join
- **Future Earth Open network** network.futureearth.org
 - [Join group](#)
 - Invite others to join
- **Twitter**
#suginexus