




ERA-NET Cofund Urban Accessibility and Connectivity

Overview

- ▶ **Established by** JPI Urban Europe and Horizon 2020
- ▶ **Application** 2-step
- ▶ **Call budget** Approx. 22 M €
- ▶ **Countries** 16 (23 partners)

Timeline

- 
- ▶ **Call opening** 17 December 2019
 - ▶ **Pre-proposal deadline** 17 March 2020
 - ▶ **Invitations to submit full proposal** May 2020
 - ▶ **Full proposal deadline** 22 September 2020
 - ▶ **Funding decisions announced** December 2020
 - ▶ **Start of projects** December 2020 - March 2021
 - ▶ **Projects end** 2024

About the call

- ▶ Responds to the Horizon 2020 Societal Challenge “**Smart, green and integrated transport**” 2019 call topic supporting Joint Actions on sustainable urban accessibility and connectivity
- ▶ Addresses the challenges of sustainable urban passenger mobility, freight transport and connectivity as **integral and essential parts of sustainable urban development**
- ▶ Aims at creating and testing new solutions and approaches for sustainable urban mobility
- ▶ **Several joint calls for research and innovation projects** will be implemented which will focus on measures to improve urban accessibility and connectivity for all groups of society while moving towards more sustainable urban mobility systems

The projects should address the following challenges*:

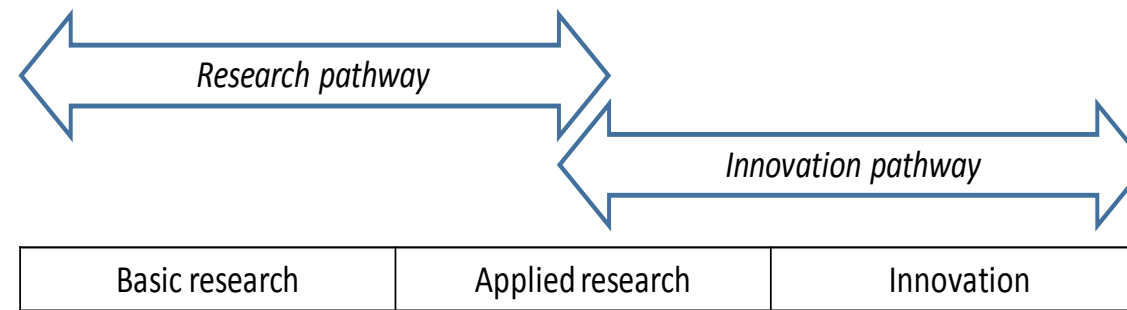
- ▶ **Challenge 1:** Evolving solutions for an integrated approach on sustainable urban physical mobility and transport, land use and digital connectivity
- ▶ **Challenge 2:** Develop and support the implementation of innovative mobility systems and services with a potential to contribute to sustainable urban mobility
- ▶ **Challenge 3:** Transform and re-organise urban spaces to pave the ground for sustainable urban mobility and accessibility at local level, from the street scale to the district
- ▶ **Challenge 4:** Develop effective policy options for achieving a shift towards sustainable urban accessibility and connectivity
- ▶ **Challenge 5:** Change behaviours and perspectives towards sustainable urban accessibility and connectivity

*Projects must address at least one of the five challenges

Types of research and innovation supported

Applicants should identify either a **research pathway** or an **innovation pathway** for their project (though research/innovation is seen as a continuum and most projects will be a mix of both)

- ▶ **Research pathway:** supports projects aiming at producing knowledge, analysing data, better understanding and modelling phenomena and developing expertise and tools that will be useful to stakeholders, practitioners and policy makers. For proposals mainly focused on basic and/or applied research
- ▶ **Innovation pathway:** supports projects aiming at developing/improving practical, operational solutions – technological and organisational – for companies, local communities and authorities in charge of urban transport and urban planning and management. For proposals mainly focused on applied research and innovation



Types of projects

- ▶ Projects are expected to take a ***transdisciplinary and co-creative approach*** with a strong stakeholder or practitioners' participation already from the start
- ▶ Projects should support collaboration that goes beyond individual national efforts and demonstrates ***transnational benefit***
- ▶ Research should be based on ***actual urban mobility challenges*** with results that lead to new approaches, tools, instruments, insights and knowledge
- ▶ Project results are expected to make a ***clear contribution to the realisation of relevant urban, regional, national and European transport policy objectives*** that can help cities, urban residents, communities, business and institutions make the most use of new developments in urban mobility
- ▶ Projects should indicate how they are positioned with respect to the state-of-the art. They are ***expected to explain how they complement and go beyond earlier or on-going European, national and regional R&I projects*** in the domain or on the subject they would like to explore.

Who can apply?

- ▶ Municipalities
- ▶ Citizens' representatives
- ▶ Research organisations
- ▶ Companies
- ▶ NGOs
- ▶ Regions
- ▶ Cities
- ▶ Consumers *

- ▶ ...and other ***stakeholders dedicated to the development of European urban areas***
- ▶ Project consortium consisting of at ***least three eligible applicants*** from at least three participative countries
- ▶ Partners from third countries are welcome in consortium but need funding from other sources

*Please note that a specific funding agency may not fund each type of organisation. For further information see Annex A in the call text

Participating countries and partners

Country	Partner
Austria	FFG BMVIT
Belgium	F.R.S-FNRS FWO VLAIO Innoviris
Cyprus	RPF
Denmark	IFD
France	ANR
Germany	DLR BMBF
Italy	MIUR
Latvia	VIAA

Country	Partner
The Netherlands	NWO
Norway	RCN
Poland	NCN
Romania	UEFISCDI
Slovenia	ARRS
Sweden	Formas SWEA Vinnova
Turkey	Tübitak
United Kingdom	ESRC

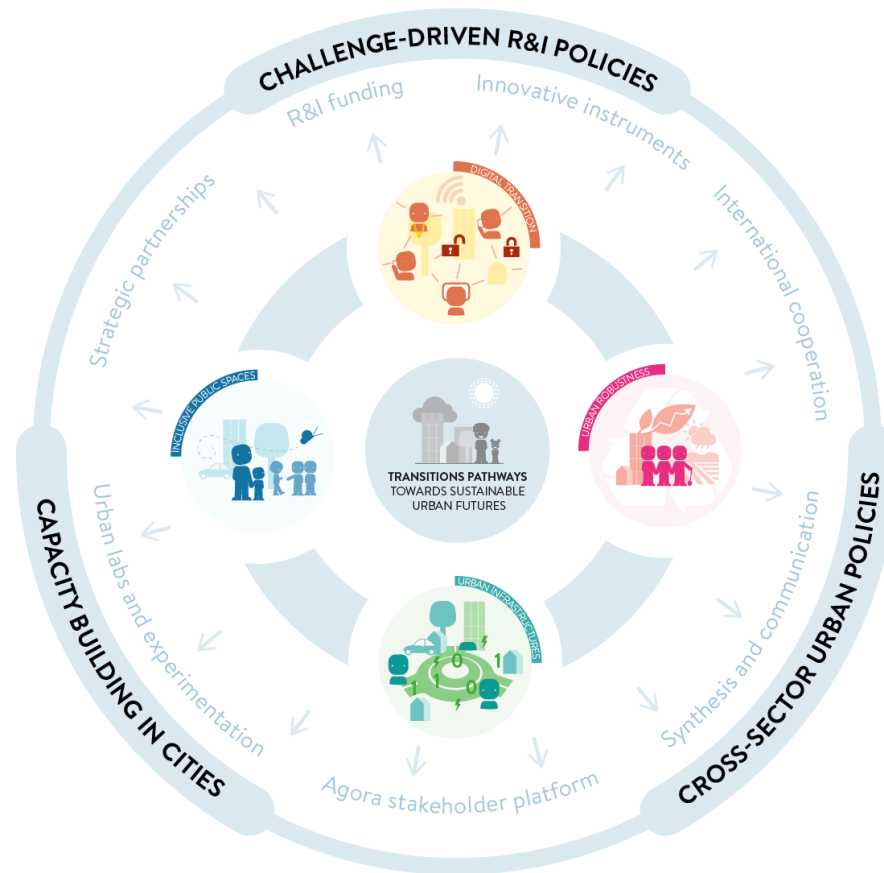
Become a member of the JPI Urban Europe Community

Network access

- ▶ Researchers
- ▶ Practitioners
- ▶ Stakeholders
- ▶ Experts in urban development
- ▶ Etc.

Programme activities

- ▶ Programme seminars
- ▶ Dissemination of results
- ▶ A central programme website
- ▶ Etc.



Upcoming call activities

[Matchmaking webinar](#)

- ▶ 27 January 13.00-14.30, online

[LinkedIn group](#)

- ▶ For self-organised matchmaking and networking

More information

Margit Noll, Chair of the Management Board, JPI Urban Europe
Margit.noll@jpi-urbaneurope.eu

Klara Brooms Seving, Communication Officer, JPI Urban Europe
Klara.brooms.seving@jpi-urbaneurope.eu

Call Secretariat

Auélien Gaufrès or Pascal Bain, Agence Nationale de la Recherche
Enuac@agencerecherche.fr

Contact your national agency for further information

[List of national contact points](#)