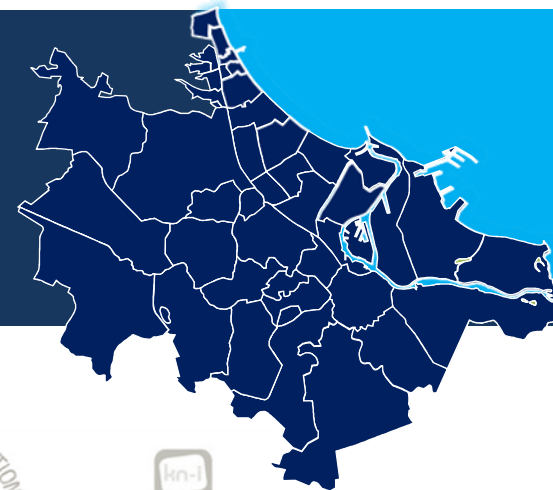


RESULTS - WHAT ARE YOUR MOST PROMISING RESULTS SO FAR?



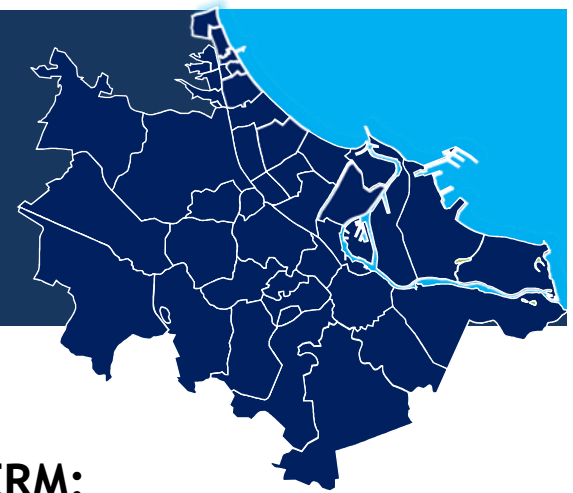
Comodal Local
Node



CRUNCH project explores the **FOOD-WATER-ENERGY** Nexus: 19 partners from 6 countries working jointly at building an assesment tools for cities (Integrated Design Support System)



IMPACTS - WHAT DO YOU EXPECT TO BE THE 2-3 MOST IMPORTANT SHORT TERM AND LONG TERM IMPACTS FROM YOUR SUGI PROJECT?



Gdansk FWE Nexus Neighbourhood Model, visualisation: Karol Drobniowski

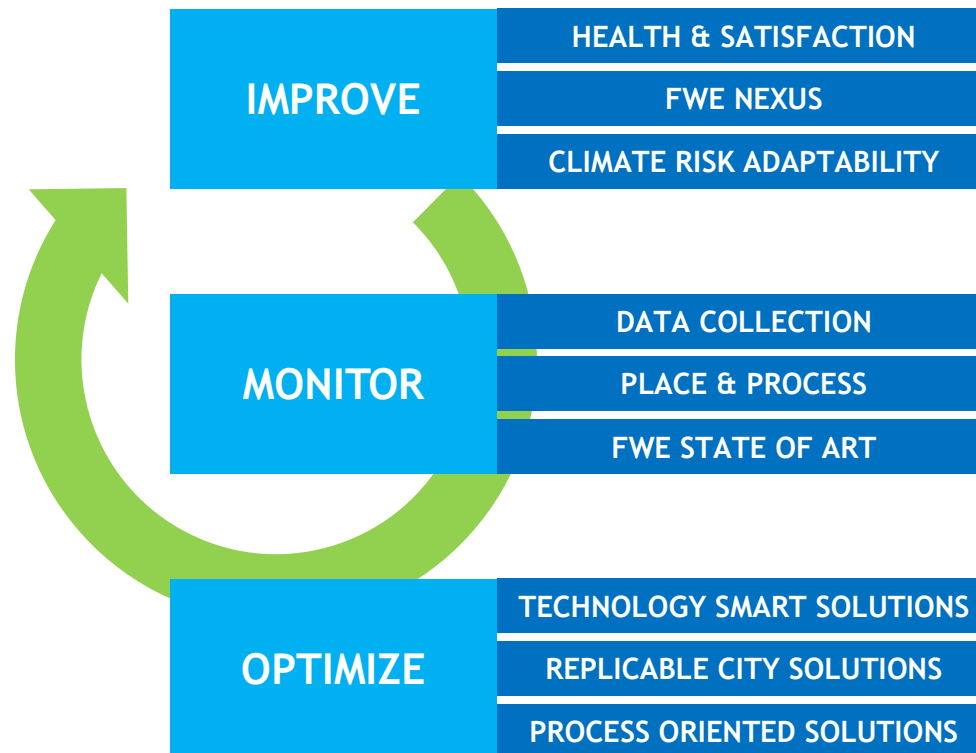
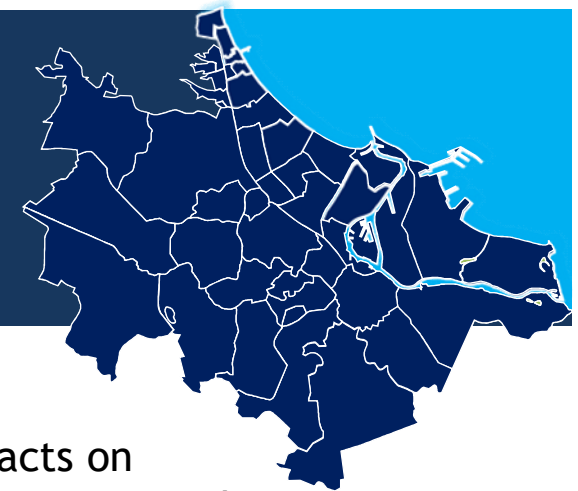
SHORT TERM:

Educational impacts on city and academia;
Non Invasive Measurement System test bed;
Comodal Local Nodes test bed.

LONG TERM:

Comodal Local Nodes capacity;
Food Water Energy Nexus Neighbourhood.

APPROACHES - HOW WILL YOU GO ABOUT TO REALIZE THESE IMPACTS? WHAT IS YOUR APPROACH?



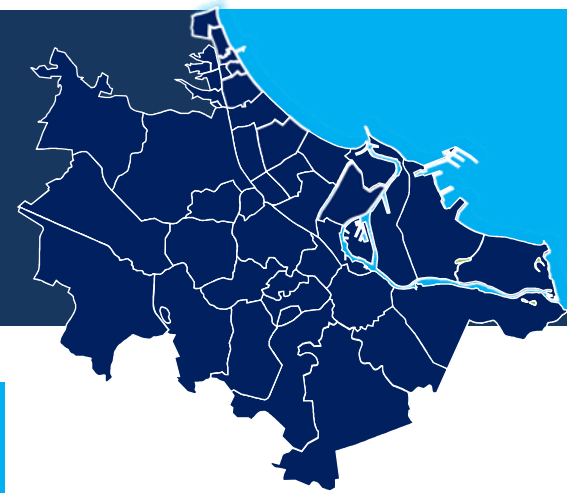
SHORT TERM:

Educational impacts on city & academia - continued
Comodal Local Nodes test bed - innovation patent

LONG TERM:

Comodal Local Nodes capacity - research further
Food Water Energy Nexus
Neighbourhood - IDSS platform continued, as the theoretical approach needs to be tested and developed in more practice oriented-research.

NETWORKING AND CAPACITY BUILDING - WHAT SUPPORT IN TERMS OF COLLABORATION WITH OTHER SUGI PROJECTS AND DEDICATED ACTIVITIES FROM THE SUGI IMPLEMENTATION TEAM DO YOU NEED TO REALIZE THESE IMPACTS?



**COMODAL
LOCAL
NODE**

FWE BOX / pavilion

Smart solutions implemented,
city facility, FOOD-WATER-
ENERGY Nexus in micro scale

PUBLIC SQUARE

energy storage
microclimate sensors
measuring human flow

GREEN WALL

vertical microretence

Comodal Local Node
PROTOTYPE

TESTING
MONITORING
EVALUATING

IMPROVING RESEARCH
AND DESIGN

UPGRADE / SPECIALIZATION / REPLICATION

MODEL

FWE Nexus tools need
more practice oriented
research in other cities