

WASTE FEW ULL
Waste: Food – Energy – Water Urban Living Labs

FAPESP/Belmont Forum
Sustainable Urban Global Initiative



University of Campinas

Nexus FEW - Food, Energy, Water Governance



São Paulo *in Natura* Lab **“OUR LABORATORY IS THE NATURE”**

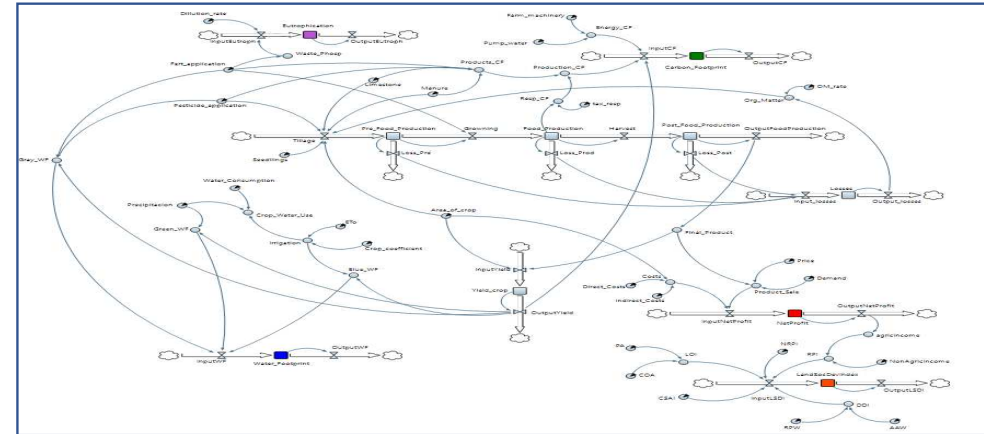
Prof. Ester Dal Poz
Center for Agricultural Economics (NEA), Institute of Economics (IE),
Management Research Center (CEPAD, FCA)
Brazil

São Paulo *in Natura* Lab – Objectives

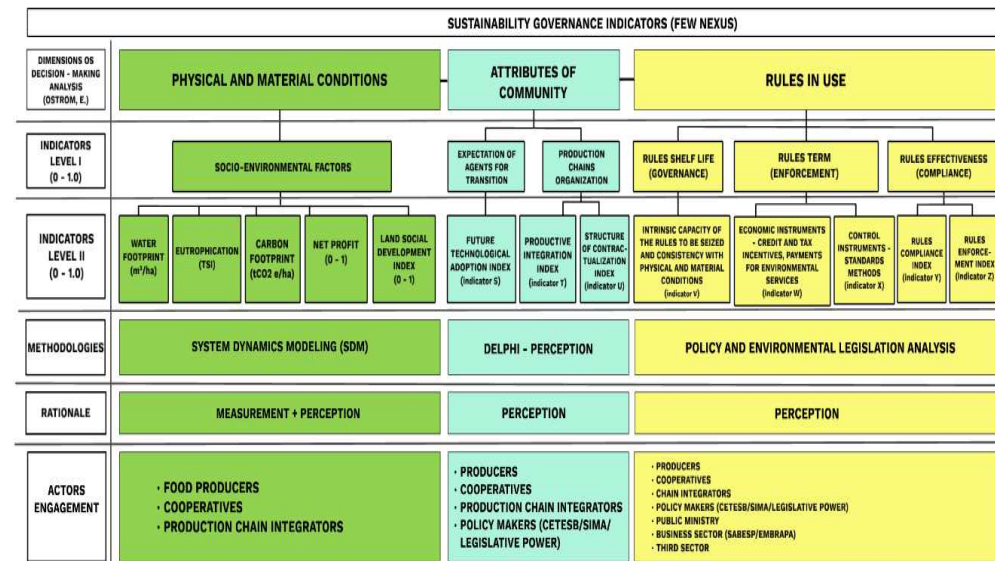
“To be an innovation-driven institution for sustainable food production”

Results – What are your most promising results so far?

1. Map and model the level of sustainability of the food production systems (for two pilots at the borders of the Atlantic Rain Forest), using system dynamics and agent based tools



2. Development and dissemination of sustainable innovation decision-making tool - multi-criteria indicators



Impacts - What do you expect to be the 2-3 most important short term and long term impacts from your SUGI project?

Short term

- a) Creation and mobilization of a shareholders and stakeholders *situation arenas* for transition;

Long term

- a) New level of actors accountability for sustainable food production
- b) Evolution of sustainability patterns of food production and human development
- c) Preservation of the Atlantic Rain Forest in Brazil

Approaches - How will you go about to realize these impacts?
What is your approach?

- **Generation of accountability for transition, through the adoption of technological and organizational innovations for food production, at the board of the Atlantic Rain Forest.**
 - It is an *ex ante* impact planning approach, in which the stakeholders and policy makers interactions must create the desired collective transition future.
- **Public choice approach – generation of *situation arenas* (Ostrom's ecosystemic services approach) for an evolutionary transition**

Networking and Capacity Building - What support in terms of collaboration with other SUGI projects and dedicated activities from the SUGI implementation team do you need to realize these impacts?

1. To expand the *arenas* presence through a broader geopolitical area.
2. To share sustainability indicators application results, concerning our common goals