

Projects speed presentations

HOUSE-IN

Concept and aims of the project

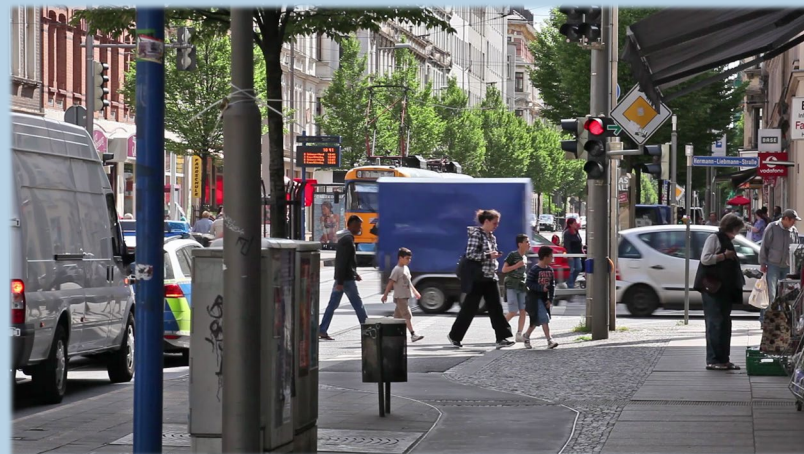
HOUSE-IN

The Housing-Integration-Nexus: shaping exchange and innovation for migrants' access to housing and social inclusion

? How can integration be achieved through inclusive housing strategies in urban neighbourhoods?

Objectives:

- use existing inter-disciplinary, cross-sectoral and trans-regional knowledge for identifying gaps at the housing-integration intersection,
- co-create new paradigms of discourse and co-design innovative housing strategies based on a cross-case learning exchange and
- foster new capacities for policy and action through building a robust methodology for transfer.



Picture UFZ Leipzig

PRACTICE PARTNERS

Leipzig/Germany

- City of Leipzig, Department for Migration and Integration
- International Women/ Internationale Frauen e.V.
- Contact Point Housing/ Kontaktstelle Wohnen des Zusammen e.V.

Riga/Lettland

- City of Riga, Department of Welfare
- Gribu palīdzēt bēgļiem/ We want to help refugees
- Patverums Drosa Maja/ Shelter “Safe House”
- Providus - Centre for Public Policy

Helsingborg/Lund

- City of Lund, Housing Department
- Helsingborgshem

Vienna

- City of Vienna, Wiener Wohnen (municipal housing)
- Wonderland – Platform for Europ. Architecture
- wohnbund:consult eG

Local Democracy Agency (LDA) Zavidovici, Brescia/Italien

Partners and stakeholders

SCIENTIFIC CONSORTIUM



HOUSE IN addresses the **Housing-Integration-Nexus**:

- housing as the living space itself and the capacity for social participation and care within residential environment
- including close-to-home open space, neighbourly interaction and places of encounter
- housing as “first step” of arrival and local inclusion

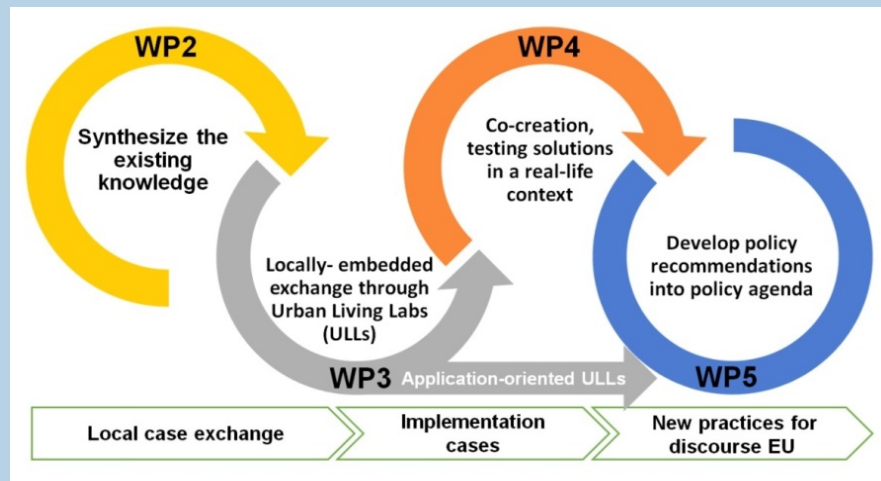
Urban Living Labs Approach

= shaping a sustainable and inclusive exchange on the Housing-Integration-Nexus

- local ULL for exchange and learning with urban practitioners
- identification of challenges, problems and open questions
- local networking, exchange and learning

Expected results, outcomes and impacts

HOUSE-IN Working programme



<https://www.ufz.de/house-in>

LoReMi

LoReMi

Local Responses to Precarious Migrants

Frames, Strategies and Evolving Practices in Europe

United Kingdom

University Of Oxford:

Sarah Spencer & Marie Mallet

Cardiff City Council:

Siân Sanders, Manager for Cohesion
and Community Engagement

Germany

Fulda University:

Ilker Ataç & Maren Kirchhoff

Frankfurt City Council:

Dr. Petra Tiarks-Jungk, Director,
Humanitarian Consultations,
Department of Health

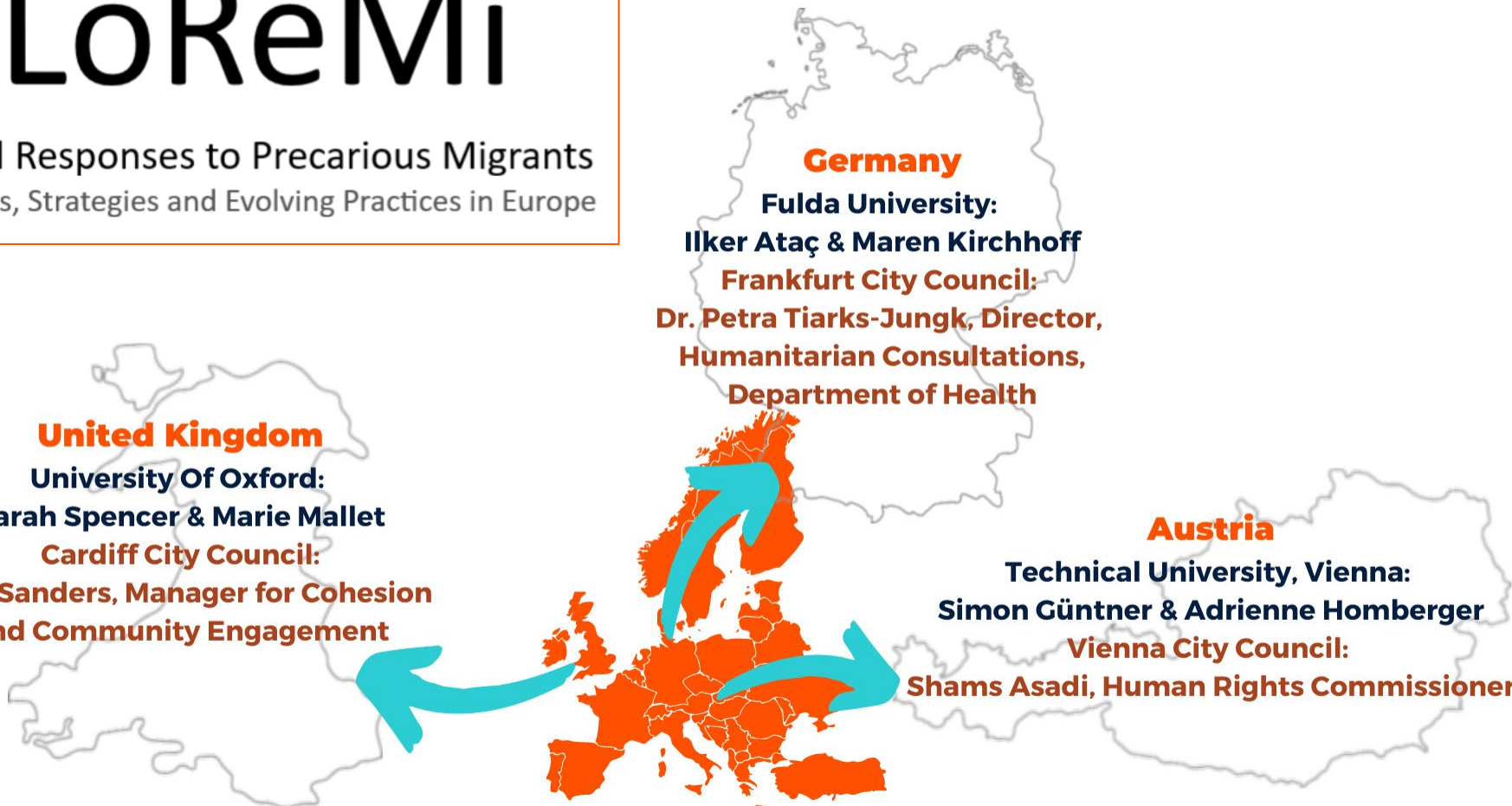
Austria

Technical University, Vienna:

Simon Güntner & Adrienne Homberger

Vienna City Council:

Shams Asadi, Human Rights Commissioner





Aims

- Understand the challenges precarious migrants face
- Special focus on women and children
- Investigate contrasting city responses, in restrictive, legal contexts
- Consider the particular impact and lessons from COVID-19
- Explore forms of cooperation with NGOs to provide services
- Assess cities' contrasting framing of their approaches
- Facilitate knowledge-exchange within and between European cities
- Develop ideas for policy and practice innovation in this field

'Precarious migrants':
people who lack,
or may lose,
legal residence status

WP 1

Project
Management

WP 2

Background &
Conceptual
Paper

WP 3

Case Study:
Cardiff

WP 4

Case Study:
Frankfurt

WP 5

Case Study:
Vienna

WP 6

Knowledge
Exchange

WP 7

Comparative
Report &
Dissemination

Outcomes

- Understand factors that shape city responses to vulnerable migrants, and implications for migrants
- Identify potential solutions – in healthcare, shelter, education, protection of victims and other services
- Strengthen authority and capacity of city partners in proposing inclusive measures and securing resources and partnerships needed
- Strengthen capacity of NGOs to provide or secure support for excluded migrants
- Greater political acceptance of the need to provide access to essential services
- Contribute to urban sustainability through strengthening inclusion and cohesion



EMPOWER



EMPOWER



Aim: To develop new methods of citizen empowerment and knowledge co-creation for gender-aware integration.

WP1 Co-creating new knowledge on the housing needs of hidden groups and communities through recruiting, upskilling and empowering Community Researchers

WP2 Developing gender-aware insights into housing challenges and experiences of migrants and migrant women, including the impact of COVID-19

WP3 Tackling problems of housing affordability, segregation and discrimination through wider stakeholder engagement

WP4 Establishing a new International Community of Practice for migrant integration





Community Centre,
Swedish Church

Brushstrokes Community Project



Results, outcomes and Impacts

- **Group of Community Researchers** recruited, trained and upskilled.
- **'Policy Café'** with wider stakeholders.
- **Forward-looking empowerment strategy** for future citizen engagement in local housing and urban planning processes.
- **New 'Theory of Change' approach** for integration.
- **New International Community of Practice** will be established to create a platform develop and implement best practice in relation to citizen engagement and empowerment.

MICOLL

MICOLL – Migration and housing: Meeting refugees' housing needs through collaborative housing programmes

Objectives of the project

To assess the potential of Collaborative Housing (CH) for refugee integration in Austria, Sweden and the UK by:

- a) Delivering a concise state of the art of CH for marginalised groups across Europe, exploring synergies and cross-learning based on previous research in the three target countries;
- b) Identifying relevant actors, processes and institutional systems for CH support and upscaling; and proposing operational recommendations to a range of stakeholders;
- c) Initiating translation of developed knowledge into pilot implementation processes (test beds) in Austria, Sweden and the UK; and
- d) To set up an online platform for multi-sector knowledge sharing, dissemination and learning among urban development actors.

MICOLL – Migration and housing: Meeting refugees' housing needs through collaborative housing programmes

Partners and stakeholders

Sweden	Austria	United Kingdom
<ul style="list-style-type: none"> • Jaan-Henrik Kain, Project Coordinator, Gothenburg Research Institute, University of Gothenburg, jaan-henrik.kain@gu.se • Jenny Stenberg, Gothenburg Research Institute, University of Gothenburg, jenny.stenberg@gu.se • Marco Adelfio, Architecture and Civil Engineering, Chalmers University of Technology, adelfio@chalmers.se • Jesper Bryngelsson, Swedish Union of Tenants • Tinna Harling, Egnahemsfabriken Centre for Collaborative Housing, • Britt-Marie Rastman, Municipality of Tjörn, Integration Unit 	<ul style="list-style-type: none"> • Richard Lang, Bertha von Suttner Private University & Aschauer Corporate Governance Forschungs GmbH, richard.lang@jku.at • Ernst Gruber, wohnbund:consult eG • Kurt Hofstetter, IBA_Vienna • Judith Moser-Harnoncourt, neunerimmo 	<ul style="list-style-type: none"> • Melissa Fernández Arrigoitia, Lancaster University, m.fernandeza@lancaster.ac.uk • Levent Kerimol, Community Led Housing, London hub • Zohra Chiheb, London Borough of Camden • Frances Harkin, Housing Associations' Charitable Trust • John Goodman & Frances Toomey, UK Cohousing Trust

MICOLL – Migration and housing: Meeting refugees' housing needs through collaborative housing programmes

Collaborative housing examples in three countries

OASE.inklusiv in Vienna, Austria



Photo credit: einszueins architektur

Bergsjön in Gothenburg, Sweden

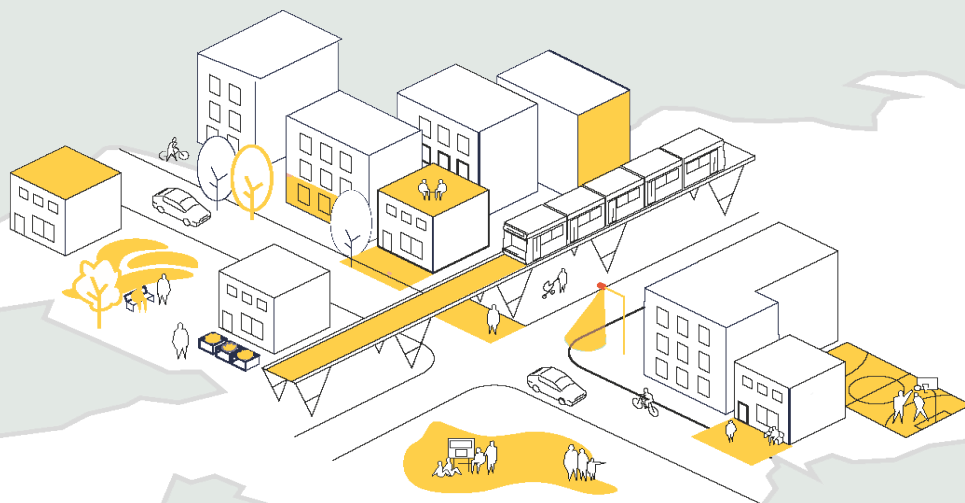


Photo credit: Kain/Stenberg

Case selection in progress, UK

ProSHARE

ProSHARE



- ProSHARE - Enhancing Diversity, Inclusion and Social Cohesion through Practices of Sharing in Housing and Public Space

National funding donors



Arts and
Humanities
Research Council



Economic
and Social
Research Council



FFG
Promoting Innovation.

FORMAS



Federal Ministry
of Education
and Research

Partners

U N I K A S S E L
V E R S I T Ä T



The
University
Of
Sheffield.



**Hochschule für Technik
und Wirtschaft Berlin**

University of Applied Sciences



UPPSALA
UNIVERSITET



TECHNISCHE
UNIVERSITÄT
WIEN

Vienna University of Technology

Stakeholders

Bezirksamt Friedrichshain - Kreuzberg von Berlin | Buzwan Morell Architekten GmbH | Familien- und Nachbarschaftszentrum, Wrangelkiez, Kiezanker 36, Berlin-Kreuzberg | Berlin University of the Arts (UdK), Design Research Lab | Municipality of Uppsala, Urban Development Office | Municipality of Uppsala, Urban Development Office | Public Works, London |

Concepts:

- Sharing and space-commoning
- Housing and public space
- Space competition
- Migrant communities
- Diversity, Inclusion, Social cohesion
- Intersectional (in)equality

Objectives:

- To **EXPAND** partners' ongoing research on practices of sharing
- To **EXCHANGE** results from previously related projects
- To **SUPPORT** existing practices of sharing and commoning

Concept, aims and goals of the project

WP1

Common Ground

This WP focuses on 1) sharing results from previous inter-and transdisciplinary research undertaken by the partners, 2) exchanging expertise on methods and knowledge on practices of sharing, urban commoning, migration, housing and use of public spaces, in social mixed neighbourhoods and 3) expanding the ongoing Germany based research network *StadtTeilen* into Austria, Sweden, and United Kingdom

WP2

Transnational Research

The WP aims at: 1) understanding – with a comparative logic and special focus on mixed neighbourhoods – how housing and public space is shared, 2) identifying and comparing forms and conditions under which practices of sharing take place, 3) reflecting on how existing commons-based facilities and sharing practices can be extended towards potentially less represented groups (i.e. newly arrived migrants).

WP3

ProSHARE-labs

The WP aims at: 1) sustaining existing urban commoning practices related to access to housing and the use of public space; 2) exploring how existing sharing practices can be extended towards new migrants; 3) testing different forms of sharing practices; 4) opening physical and virtual spaces for interaction and exchange (using intranets based on DIY digital commoning tools).

WP4

Dissemination

WP5

Project Management

Expected results, outcomes and impacts

Exp. **Results**

- **Activation** of new modes of civic engagement, and stable networks for social cohesion.
- **Identification of conditions** for co-production processes between migrant and host communities and stakeholders
- **Synergies creation** based on experiences from previously research and the ProSHARE Labs.
- **Cross-country comparison** on sharing practices of housing and public space.
- **EU-wide knowledge base** on urban co-production innovative practices that bridge diverse population groups and generate decommodified living and public spaces.

Exp. **Outcomes**

- **ProSHARE Website**
- **Conference presentations**
- **Scientific articles**
- **Policy brief(s)**
- **ProSHARE Labs**
- **Dissemination activities**

Exp. **Impacts**

- **Research-practice** dialogue, conditions for sharing transferred into the fields of architecture and planning
- **Capacity Building** on digitally based new forms of research methods
- **Civic engagement** that contributes to increase social inclusion, particularly for newly arrived migrants with little access to political representation.
- **Policy advice** for future policies in the field of housing and migration.
- **Networking** based on identified synergies between researchers and stakeholders
- **Spaces of interaction** and co-production between diverse populations to reduce space competition.

The Art of Belonging

The Art of Belonging: Social integration of young migrants in urban contexts through cultural place-making

Aims to

- deepen understanding of how arts-based place-making activities contribute to enhanced connections between communities in urban places;
- facilitate young migrants' place-attachment and integration through cultural participation;
- co-create a sustainable repertoire of tools for municipalities to use in their strategic plans for supporting migrants;
- develop a shared knowledge platform for cities across Europe to find sustainable solutions to social integration

The Art of Belonging: Social integration of young migrants in urban contexts through cultural place-making

Project partners and stakeholders



And representatives from the municipalities and cultural sectors of our three case study cities:



Hannover



Lund



Nottingham

The Art of Belonging: Expected results, outcomes and impacts



- Deepening understanding of the role of arts and cultural place-making in social belonging for migrants.
- Establishing a set of principles for city municipalities and cultural institutions to foster social belonging and connectedness
- Extending the Cultural Rucksack concept
- Generating affordances that recognize migrants' capabilities and aspirations.
- Developing virtual exhibition spaces to enact the digital right to the city across cities
- Exploring comparatively what ideas can or can't be transferred across contexts.

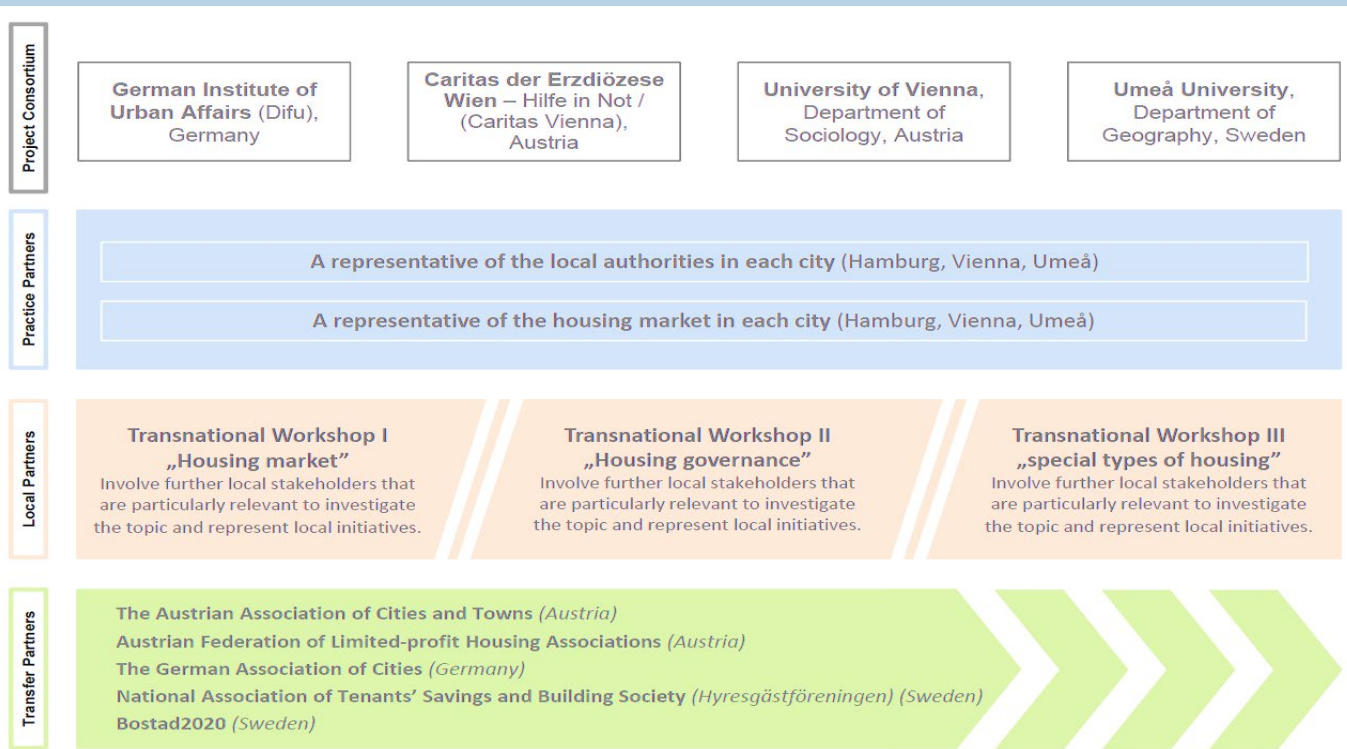
Inclusive Housing

Inclusive Housing: Housing is the beginning

- Access to housing is a key factor in stabilizing the often precarious living situation of refugees, and is a substantial means for integration.
- The project “Inclusive Housing” aims to deal with the various obstacles refugees are facing in terms of access to long-term housing perspectives.
- By focusing on three topics – “housing market and access to affordable housing”, “housing governance for inclusive housing” and “special types of inclusive housing” – the consortium aims to present in detail challenges for refugees with regard to housing.

Inclusive Housing

Partners and Stakeholder



Inclusive Housing

Project objectives and expected outcomes

» *Specification of the challenges for refugees with regard to housing*

- Topics: access to housing segments, housing biographies and living situations
- Impact: demonstrate the particular needs of refugees

» *Contribution to urban housing policies and strategies*

- Topics: structures at the housing market, relevant stakeholders, actions of housing providers, development of innovative approaches
- Impact: raise awareness for social and inclusive approaches in housing as well as the consequences of discrimination in the housing market; strengthen housing policies for refugees

» *Learning from each other*

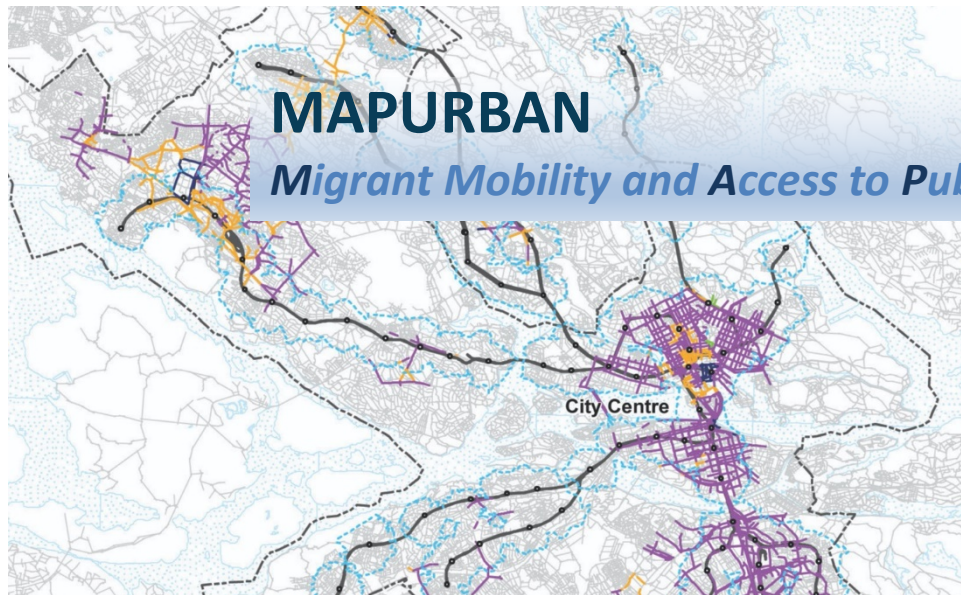
- Topics: transnational exchange, comparative view of developments, new findings
- Impact: strengthen civil society perspectives towards political actors; spread valuable experiences of residents (of integrative housing projects); promote exchange about housing for refugees among European partners

MAPURBAN



MAPURBAN

Migrant Mobility and Access to Public Urban Resources



MAPURBAN aims to improve migrants' access to urban resources such as public transport and civic institutions in **Stockholm, London and Berlin.**



MAPURBAN key objectives:

Objective (1) to conduct a multi-scale analysis of migrant access to urban infrastructures to advance knowledge for inclusive and sustainable planning and policy-making.

Objective (2) to construct a multidisciplinary comparative policy evaluation to enhance measures for overcoming barriers to migrant accessibility and mobility, with a focus on the translation of academic knowledge to policy makers.

Objective (3) to work with newly arrived migrants to co-produce readings of their own perceptions of the urban environment.

MAPURBAN Partners and stakeholders

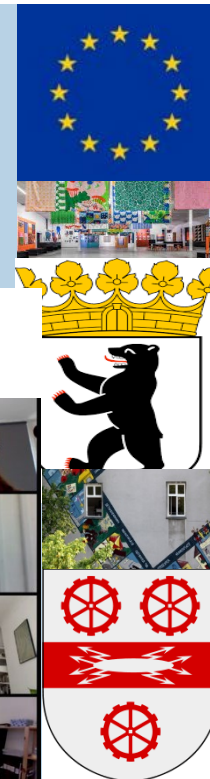
Academic Partners

Dr. Jonathan Rock Rokem (PI), University of Kent
 Prof. Laura Vaughan, University College London
 Prof. Susanne Wessendorf, Coventry University
 Prof. Ann Legeby, Royal Institute of Technology, Stockholm
 Prof. Antonie Schmitz, Free University Berlin

Municipal and civil society partners & stakeholders

Senate Department for Urban Development, Berlin
 Orangotango Collective, Berlin
 Sundbyberg Municipality, Stockholm
 Marabouparken Art Gallery, Stockholm
 Growth and Regional Planning Office, Stockholm
 Borough of Tower Hamlets, London

MAPURBAN launch
 11th June 2021



Freie Universität



Berlin



Research Centre
 Trust, Peace and
 Social Relations



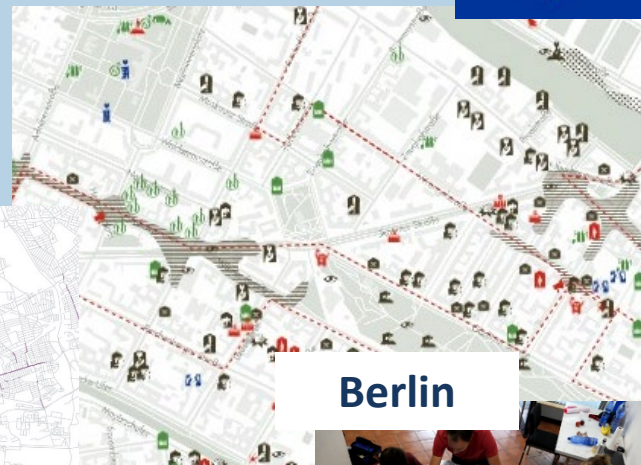
MAPURBAN expected results, outcomes and impacts



MAPURBAN key impacts

Review and adapt existing spatial and social strategies in each city to assist newly arrived migrants.

Highlight successful local initiatives in each city and what we can learn and adapt to other urban contexts.



Berlin



London



Stockholm

