

POSITIVE ENERGY DISTRICTS & NEIGHBOURHOODS

# POSITIVE ENERGY DISTRICTS AND NEIGHBOURHOODS FOR CLIMATE NEUTRALITY

JOINT CALL FOR PROPOSALS

CALL TEXT



Submission deadline: February 24th 2022, 12:00 CET

October 20<sup>th</sup> 2021

Version 1.00

## Positive Energy Districts and Neighbourhoods for Climate Neutrality

Programme:	Positive Energy Districts & Neighbourhoods (PED)
Call:	Positive Energy Districts and Neighbourhoods for Climate Neutrality
Call topics:	Topic 1: PEDs towards climate neutrality: transforming existing urban neighbourhoods Topic 2: Making PEDs happen: process innovation and business models
Participating countries and agencies	Austria (FFG), Belgium / Brussels Capital Region (Innoviris), Denmark (Innovfund), the Netherlands (RVO), Italy (MUR), Romania (UEFISCDI), Sweden (SWEA), Turkey (TÜBITAK)
Submission deadline full proposals:	February 24th 2022, 12:00 CET
Earliest estimated project start:	July 2022
Overall budget:	EUR 7.85 million
Research types/projects:	Applied research and/or Innovation / Implementation
Project duration	up to 36 months
Relevant transnational documents	Call text (this document), proposal form and the financial sheet For national documents and rules, please see chapter 6.
Online submission at:	<a href="https://ecall.ffg.at/Cockpit/Home?fid=42529808">https://ecall.ffg.at/Cockpit/Home?fid=42529808</a>
Homepage	<a href="https://jpi-urbaneurope.eu/calls/ped-call/">https://jpi-urbaneurope.eu/calls/ped-call/</a>
Joint call secretariat:	<b>Paul Kuttner</b> <a href="mailto:paul.kuttner@ffg.at">paul.kuttner@ffg.at</a> +43 5 77 55 5069  <b>Johannes Bockstefl</b> <a href="mailto:johannes.bockstefl@ffg.at">johannes.bockstefl@ffg.at</a> +43 5 77 55 5042

## TABLE OF CONTENT

<b>1 General Information .....</b>	<b>4</b>
1.1 Structure of This Document .....	4
1.2 Background .....	4
1.3 Aims of the Programme and this Call.....	5
1.4 Types of Research, Development and Innovation Actions .....	6
1.5 Timetable from idea to project implementation .....	8
<b>2 Call Topics .....</b>	<b>9</b>
2.1 Topic 1: PEDs towards climate neutrality: transforming existing urban neighbourhoods .....	10
2.1.1 Objectives .....	11
2.1.2 Challenges to be addressed .....	11
2.2 Topic 2: Making PEDs happen: process innovation and business models .....	12
2.2.1 Objectives .....	12
2.2.2 Challenges to be addressed .....	13
<b>3 Application.....</b>	<b>16</b>
3.1 Who Can Apply .....	16
3.2 What Can Be Applied For.....	18
3.3 Preparing and Submitting an Application .....	18
<b>4 Assessment .....</b>	<b>21</b>
4.1 Evaluation Criteria .....	22
4.2 Conflicts of interest (Expert Panel) .....	24
<b>5 Implementation .....</b>	<b>26</b>
5.1 Data management .....	26
5.2 Project monitoring and reporting.....	27
5.3 Programme activities .....	28
5.3.1 Mandatory Project Events .....	28
5.3.2 Reports and Summaries for the General Public .....	28
5.3.3 Expert Support Facility.....	28
<b>6 Funding Agencies' Specific Rules of Eligibility, Budgets and     Contact Details .....</b>	<b>30</b>

# 1 GENERAL INFORMATION

## 1.1 Structure of This Document

This call text for proposals is structured as follows (see also figure below):

The first chapter states some general information on this document itself, the background and aims of the programme and the call, the timetable and participating countries, regions and agencies. The following sections cover background and main aims of the programme and this call.

The topics are described in chapter 2, while the details on applicants, application and projects can be found in chapter 3. Chapter 4 covers the assessment procedure and evaluation criteria. In chapter 5, the implementation of the projects with regards to project monitoring, reporting, data management and dissemination is described.

Chapter 6 lists the contact information of all national contact points. NCP's provide an overview on national rules, requirements and the budget, it is therefore highly recommended to contact them.

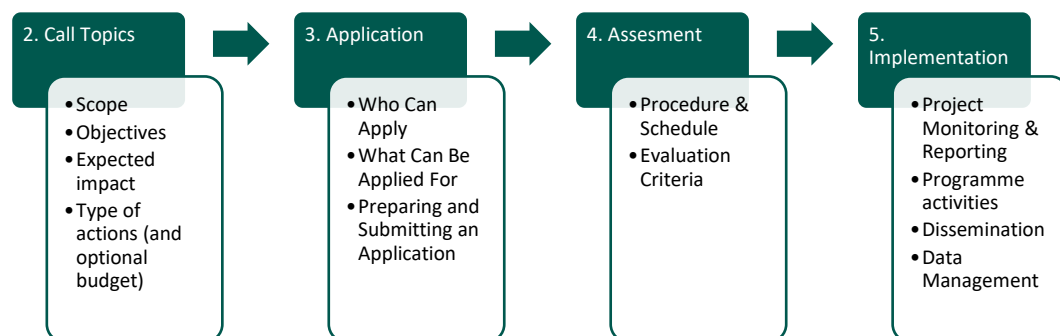


Figure 1: Structure of this document

## 1.2 Background

Europe aims to be a global role model in energy transition and reducing its carbon footprint. To decarbonise the European economy, the European Green Deal<sup>1</sup> and the Mission on Climate-neutral and Smart Cities<sup>2</sup> have set ambitious energy and climate targets. Urban areas are in the focus: In a globalised world, cities are the hubs of communication, commerce and culture. They consume more than two-thirds of the world's energy and account for more than 70% of global CO<sub>2</sub> emissions.

<sup>1</sup> [https://ec.europa.eu/info/strategy/priorities-2019-2024/european-green-deal\\_en](https://ec.europa.eu/info/strategy/priorities-2019-2024/european-green-deal_en)

<sup>2</sup> [https://ec.europa.eu/info/sites/default/files/research\\_and\\_innovation/funding/documents/ec\\_rtd\\_mission-board-report-climate-neutral-and-smart-cities.pdf](https://ec.europa.eu/info/sites/default/files/research_and_innovation/funding/documents/ec_rtd_mission-board-report-climate-neutral-and-smart-cities.pdf)

What our cities do individually and in union can set the agenda for a sustainable future. Cities are therefore uniquely positioned to play a leadership role in driving global action to address climate change.

In October 2018, the Implementation Working Group on Smart Cities of the Strategic Energy Technology Plan for Europe (SET Plan) was established to by 2025 bring about 100 urban districts or neighbourhoods<sup>3</sup> committed to sustainability, liveability and going beyond carbon neutrality by becoming energy positive. Managed by JPI Urban Europe, about 20 European countries are currently participating in the “PED Programme”<sup>4</sup>, which involves problem owners, as well as key stakeholders from industry.

Positive Energy Districts/Neighbourhoods (PED/PEN) are a subsystem within cities that aim towards energy efficiency and generation of an energy surplus. As an integral part of comprehensive sustainable urbanisation strategies, establishing Positive Energy Districts and Neighbourhoods shifts the focus from the individual positive energy building towards neighbourhoods and thus a new level of impact on sustainable urban development and the energy transition process. They bring together energy efficient buildings, renewable energy technology, and storage and district energy management systems and combine technological with architectural and social innovation. In order to mainstream PED development, feasible solutions regarding the required infrastructure, new forms of cooperation between stakeholders, public engagement, the legal framework and business models are needed. Political commitment is a prerequisite. Framework conditions for (local) energy production are changing, by means of energy policies, technologies and markets. Cities, as the main energy consumers, can only partially influence energy generation and distribution, which is directed by changes in the organisational structure of energy providers towards bigger co-operations due to an ongoing liberalisation of the energy market, as well as the development of new technologies such as “smart grid” solutions.

This call on Positive Energy Districts and Neighbourhoods (PEDs) is the second call of the PED Programme facilitated by the JPI Urban Europe, aiming at supporting the large-scale implementation of at least 100 PEDs by 2025. It succeeds the PED Pilot Call<sup>5</sup> and the EN-PED ERA-NET and will find its continuation in the European partnership “Driving Urban Transitions to a Sustainable Future (DUT)”<sup>6</sup>.

### **1.3 Aims of the Programme and this Call**

The PED Programme has identified the following key fields (see Figure 2) through mapping activities, PED Programme events and the active involvement of key stakeholder groups.

---

<sup>3</sup>[https://setis.ec.europa.eu/index\\_en](https://setis.ec.europa.eu/index_en)

<sup>4</sup><https://jpi-urbaneurope.eu/ped/>

<sup>5</sup> <https://jpi-urbaneurope.eu/calls/ped-pilot-call/>

<sup>6</sup> <https://jpi-urbaneurope.eu/driving-urban-transitions-to-a-sustainable-future-dut/>

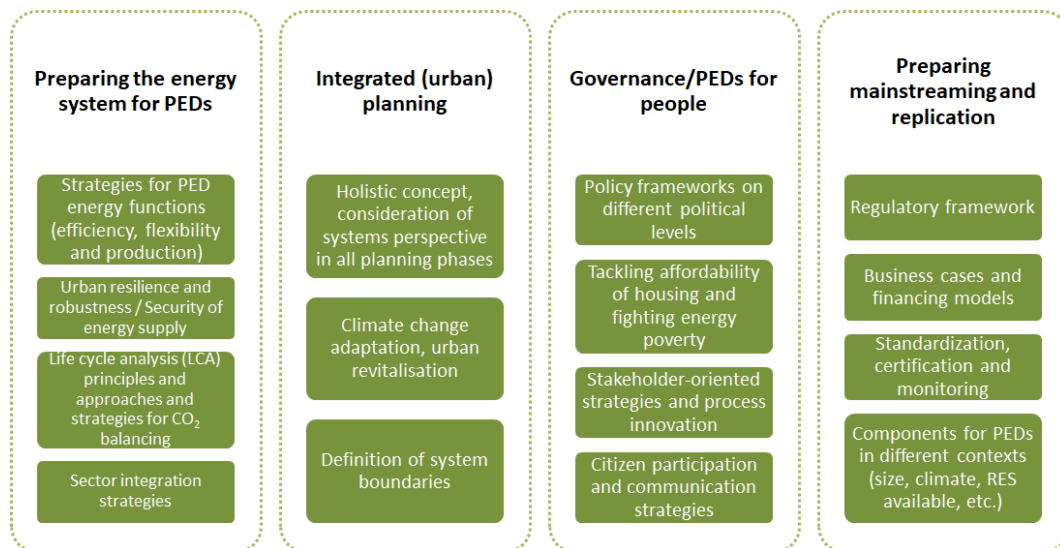


Figure 2: PED Programme key areas of action

The call aims at funding projects that

- enhance theoretical and practical knowledge for PED development in terms of both technological innovation and process innovation,
- support the strategic development of key areas of action for PED development as defined within the PED Programme (see Figure 2),
- facilitate the achievement of the PED Programme Mission of large-scale implementation of 100 PEDs by 2025,
- develop PEDs as building stones for the Horizon Europe Mission on Climate-neutral and Smart Cities to implement 100 climate-neutral cities by 2030.

## 1.4 Types of Research, Development and Innovation Actions

This call is open for proposals referring to a broad range of project types, from applied research to demonstration (see definitions below). Projects must address either “applied research” or “innovation / implementation” or both.

This **combination of the two different research types within one proposal** (with differentiation at work package level) is possible as long as involved funding agencies’ eligibility rules are fulfilled. The research type (either “applied research” or “innovation / implementation”) of each work package must always be indicated in the work package description of the proposal form.

- Please be aware that funding agencies may have the possibility to fund both or only one of the **two research types** (see chapter 6).
- Please be aware that some funding agencies may not allow applicants to use two types of research in one application.
- For other funding agencies, all applicants from this country must pick the same research type in one proposal.

It is therefore strongly recommended to consult the national contact person.

**Applied research (A)** (TRL 2-4) which for instance includes proof of concept, research to proof feasibility and small scale prototypes.

The European Commission defines this research type as industrial research:

*“ ‘industrial research’ means the planned research or critical investigation aimed at the acquisition of new knowledge and skills for developing new products, processes or services or for bringing about a significant improvement in existing products, processes or services. It comprises the creation of components parts of complex systems, and may include the construction of prototypes in a laboratory environment or in an environment with simulated interfaces to existing systems as well as of pilot lines, when necessary for the industrial research and notably for generic technology validation;”<sup>7</sup>*

**Innovation / Implementation (I)** (TRL 5-7) which for instance includes prototype testing in real environment, demonstration in real environment and system integration.

The European Commission defines this research type as experimental development:

*“ ‘experimental development’ means acquiring, combining, shaping and using existing scientific, technological, business and other relevant knowledge and skills with the aim of developing new or improved products, processes or services. This may also include, for example, activities aiming at the conceptual definition, planning and documentation of new products, processes or services; Experimental development may comprise prototyping, demonstrating, piloting, testing and validation of new or improved products, processes or services in environments representative of real life operating conditions where the primary objective is to make further technical improvements on products, processes or services that are not substantially set. This may include the development of a commercially usable prototype or pilot which is necessarily the final commercial product and which is too expensive to produce for it to be used only for demonstration and validation purposes.*

*Experimental development does not include routine or periodic changes made to existing products, production lines, manufacturing processes, services and other operations in progress, even if those changes may represent improvements;”<sup>8</sup>*

---

<sup>7</sup> Commission Regulation (EU) No. 651/20142, <https://eur-lex.europa.eu/legal-content/EN/TXT/?uri=CELEX:32014R0651>

<sup>8</sup> Commission Regulation (EU) No. 651/20142, <https://eur-lex.europa.eu/legal-content/EN/TXT/?uri=CELEX:32014R0651>



## 1.5 Timetable from idea to project implementation

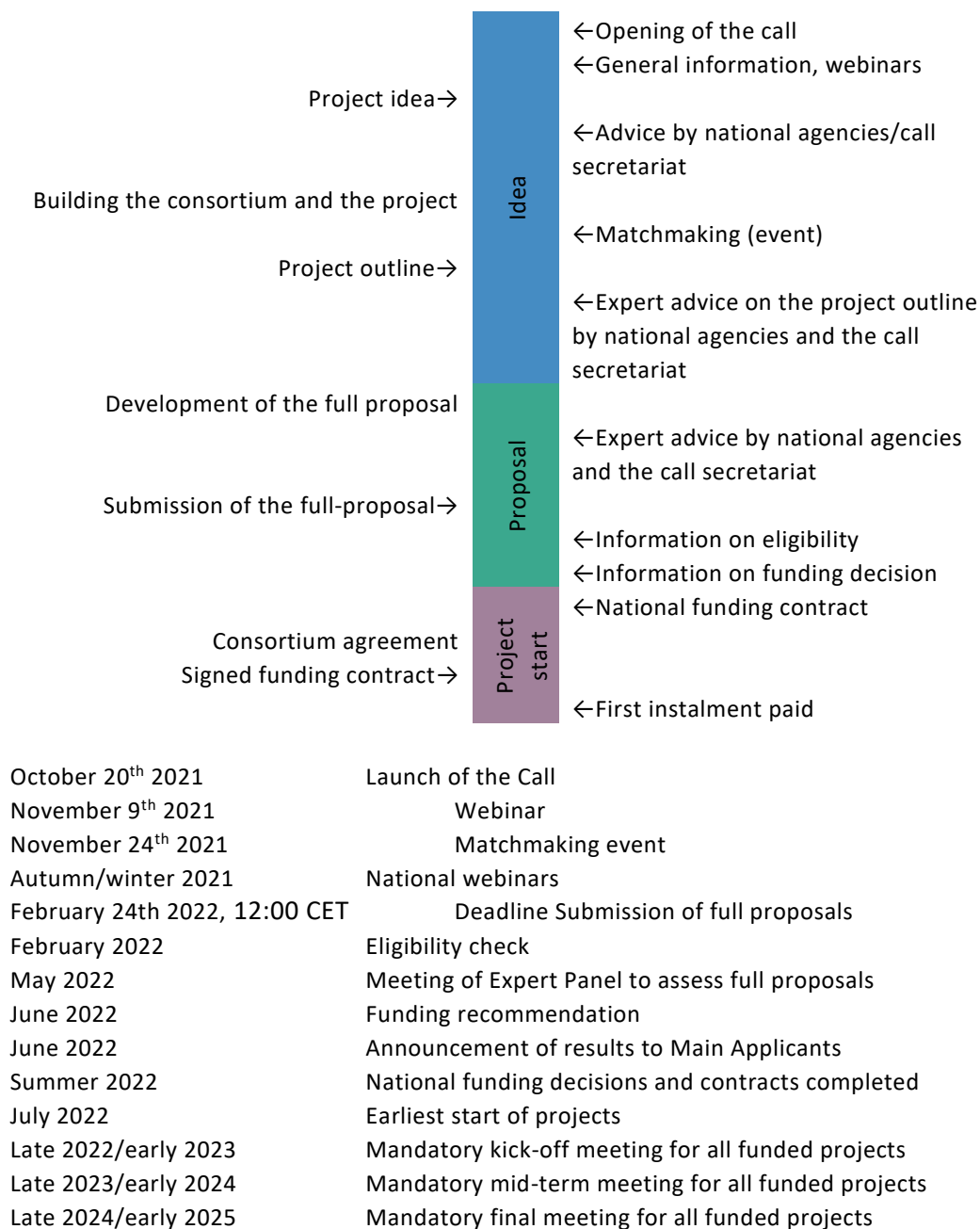


Figure 3: Timetable from idea to project implementation



## 2 CALL TOPICS

The call focuses on joint R&I projects (duration 2-3 years) that address at least one of the two topics. Projects **should select one main topic** (topic 1 or topic 2) they wish to focus their work on but **may still include challenges and objectives from the other topic**.

To further strengthen the drive towards 100 PEDs, projects are asked **to focus on the demonstration and implementation** in (at least) the second half of the project. If the focus of the project is on **a more theoretical approach**, tangible results should be ready for **testing, demonstration or implementation after half the duration of the project**.

Based on experiences from the first PED call, programme activities have been strengthened and widened to enhance exchange between the projects, stakeholders and the PED Programme Management. The **Expert Support Facility for the PED Programme** will be established within this call. This Expert Support Facility will be populated by experts nominated by the projects themselves (see chapter 5 for further details) and will:

- Act as project ambassadors
- Support the PED Programme Management in its efforts to further develop key areas for PED implementation.
- Work on specific challenges (see chapter 5.3.3) with the PED Programme Management
- Interconnect to other relevant experts and expertise

**Guiding principles for projects across all topics, challenges and objectives may be:**

### **Transnational benefit**

Projects should support collaboration and transnational alignment that goes beyond individual national efforts and demonstrates sharing, operationalising and transferring existing knowledge, resources, and research facilities to mutual benefit. Clear added value of the transnational consortium should be demonstrated and, if relevant, the added value for national investments.

### **Interdisciplinarity**

The complexity of the research and innovation topics in question requires interdisciplinary approaches to analyse the challenges and find solutions. Relevant disciplines include, but are not limited to for example social sciences (economics, geography, political science, psychology, sociology...), technical sciences (engineering, computer sciences) and application fields such as architecture, energy planning, traffic engineering, spatial planning, and policy development.

### **Transdisciplinarity, involvement of “stakeholders”, practitioners, citizens, community groups, NGOs**

The complex societal challenge of bringing around Positive Energy Districts and Neighbourhoods for sustainable urbanisation also asks for knowledge on and insight

in transition, innovation and implementation processes, acceptance of new systems and services and insight in short- and long- term behaviour of stakeholders.

Therefore collaboration and co-production of knowledge with research users and such as with professionals in companies, cities and communities, citizens, citizen groups and NGOs (grouped under the generic name of “stakeholders” below) is highly relevant.

All projects must clearly engage stakeholders and demonstrate cities’ and user needs relevant to the project goals. Therefore, consortia submitting proposals to this call are asked to describe how stakeholders and cities are actively involved in the project (such as throughout the various stages of project design, conduct, analysis and dissemination). The extent of involvement may vary according to the context of the project proposed and national/regional regulations of participating funding organisations.

### **Outputs and outcomes of the projects, broader impacts of the proposed activity**

Establishment of potential long-term partnerships, leveraging of existing knowledge networks and project co-design between researchers and stakeholders are essential components of the proposed projects.

Outputs should be targeted towards decision-making (including public and private spheres as well as communities) and innovations (technological, organisational and institutional as well as social).

The proposals are expected to clearly present:

- how PEDs are positioned as a means to achieve climate neutrality (the grand overriding goal);
- how PEDs can concretely be realised;
- how aspects/elements of PEDs can be utilised in strategies for other areas;
- how cities and stakeholders will be involved into the knowledge creation, dissemination and use of the results;
- their plan for broadly disseminating their outputs and outcomes, to enhance scientific and technological understanding and transfer their results to end users; and describe their strategy for longer-term sustainability of project outcomes.

## **2.1 Topic 1: PEDs towards climate neutrality: transforming existing urban neighbourhoods**

With the formulation of the European Green Deal and the Mission on Climate-Neutral and Smart Cities under the Horizon Europe framework programme, the European Commission has set ambitious goals regarding climate change adaptation and the energy transition. This call on Positive Energy Districts and Neighbourhoods for Climate Neutrality aims at aligning PED development with these ambitions and fostering PED development as a key building block towards climate neutrality. For European urban areas this implies a strong focus on existing urban structures and therefore innovative retrofitting and re-design strategies towards Positive Energy districts and climate-neutral neighbourhoods.

### 2.1.1 Objectives

The main objectives of this topic include:

- Development of feasible implementation strategies for Positive Energy Districts in existing, potentially historical, urban neighbourhoods
- Identification and characterisation of PEDs as key contributors to the goal of the Horizon Europe Mission on Climate-neutral and Smart Cities to create 100 climate-neutral cities by 2030. This is to be achieved by developing integrated strategies of urban retrofitting.
- Establish necessary conditions for successful dissemination and replication of PEDs beyond this project
- Integrate PED strategies in related policy areas, including mobility and climate adaptation

### 2.1.2 Challenges to be addressed

With its focus on existing urban neighbourhoods, this topic addresses a key challenge in making implementation strategies for Positive Energy Districts, as described by stakeholders involved in the development of the PED topic (especially city authorities as the main drivers of urban development). The PED Framework Definition<sup>9</sup> emphasises the optimisation of the three main energy functions: energy efficiency, energy production and energy flexibility. Regarding these three functions, PED implementation in existing urban structures is confronted with specific challenges:

- Limited options for local energy production and therefore increased need for integration of a local PED in the regional/national energy system
- Limited options for retrofitting buildings towards a high level of energy efficiency, specifically considering historical buildings
- Challenges in adapting existing infrastructure to future climatic conditions, and adding new infrastructure due to limited space
- Complex structure of land ownership and stakeholder interests at local and small-scale levels, which complicates the development of workable processes and stakeholder involvement
- Possibility of public opposition to PED projects
- Lack of capacity regarding strategies towards climate-neutrality within city administrations

Project are asked to provide solutions for implementing PEDs in existing urban neighbourhoods with respect to both technology and (policy) processes. These solutions should consider the urban and regional context and display a strong commitment to co-design and cooperation with all relevant stakeholders, as well as the general public, also considering new technologies for communication and interaction.

---

<sup>9</sup> <https://jpi-urbaneurope.eu/wp-content/uploads/2020/04/White-Paper-PED-Framework-Definition-2020323-final.pdf>

Projects are expected to consider the following aspects of this topic:

**Integration of PEDs in strategies for urban retrofitting, sustainable mobility and climate change adaptation**

- Develop and demonstrate strategies (plural!) to integrate the PED functions<sup>10</sup> into retrofitting, renewal and adaptation processes
- Demonstrate the ability to replicate these strategies, disseminate them and foster replication
- Develop strategies/roadmaps towards climate-neutral neighbourhoods (link to the Horizon Europe mission on climate-neutral and smart cities)

**Tackling of complex ownership structures and public participation by involving and incentivising grassroots initiatives and energy communities**

- Present a strategy in the proposal on how to involve and use grassroots initiatives and energy communities to overcome ownership limitations
- Execute this strategy in at least one/multiple city/cities, improve it by refining the measures taken and consequently disseminate the strategy

**Adapting the regulatory framework: defining incentives and creating opportunities**

- Develop and test strategies explaining the “why”, “what”, “when” and “how” in multiple cities and actively change regulations to foster and simplify the transition to PEDs
- Demonstrate the ability to replicate these strategies, disseminate them and foster replication

**Design and feel**

- Develop design strategies for buildings and public spaces integrating PED infrastructure (energy grid, energy storage, energy generation, etc.) in existing urban structures, addressing circularity, liveability, inclusiveness and heritage protection aspects

## **2.2 Topic 2: Making PEDs happen: process innovation and business models**

This topic focuses on the process innovation and economic feasibility for PED development. It aims at developing strategies for stakeholder cooperation, business models, public-private partnership and regulatory framework under the primacy of environmental, social and economic sustainability.

### **2.2.1 Objectives**

The main objectives of this topic include:

---

<sup>10</sup> See: White paper on Reference Framework for Positive Energy Districts and Neighbourhoods. <https://jpi-urbaneurope.eu/wp-content/uploads/2020/04/White-Paper-PED-Framework-Definition-2020323-final.pdf>, p. 6f.

- Development of strategies for the implementation of PEDs in government, business and the public, which includes
  - making PEDs an integral part of urban planning processes starting from an urban/district analysis in order to define regulatory, structural and technical constraints
  - establishing public-private partnerships, as well as partnerships with businesses (especially focusing on city authorities, the real estate industry and utilities)
- Reinforce decision-making processes both inside and outside local government
- Establishment and maintenance of broad support within government, business and the public at large for realising PEDs
- The safeguarding of circularity aspects and life-cycle-principles in business models and the regional energy system while respecting (natural) system boundaries and considering public interest

### 2.2.2 Challenges to be addressed

Several stakeholders are involved in a PED process. To build and uphold a joint vision, it is important that challenges for different stakeholder groups are identified and brought together in a crosscutting scenario. There are several layers on which each stakeholder acts and they need to enter into a dialogue to reach the PED goals. To transform city districts into Positive Energy Districts, both technical and organisational hurdles need to be mastered. Within this topic, the organisational challenges in coordinating the transition and synthesizing business models that respect natural, manmade and social boundaries are manifold:

- Coordination difficulties: many parties and interests need to be aligned continuously throughout the process, both at interpersonal, as well as at inter-organisational levels and between different areas (PEDs, Smart Cities, energy planning, urban planning, business interests, public participation, ecology, ...)
- Complex and small-scale structure of land ownership and local stakeholders interests complicating the development of workable process and stakeholder involvement
- Keeping the public and local businesses engaged throughout the process while not having concrete plans from the outset
- Mapping what is present at district level and which improvements are needed and at which decision or technical level
- Regulatory challenges involving energy communities in the process design for PEDs

Citizens have a strategic role as pointed out in EU 944/2019. Distributed energy technologies and consumer empowerment have made community energy an effective and cost-efficient way to meet citizens' needs and expectations regarding energy sources, services and local participation. Community energy offers an inclusive option for all consumers to have a direct stake in producing, consuming or sharing energy. Community energy initiatives focus primarily on providing affordable energy of a specific kind, such as renewable energy, for their members or shareholders rather than on prioritising profit-making like a traditional electricity

undertaking. By directly engaging with consumers, community energy initiatives demonstrate their potential to facilitate the uptake of new technologies and consumption patterns, including smart distribution grids and demand response, in an integrated manner. Community energy can also advance energy efficiency at household level and help fight energy poverty through reduced consumption and lower supply tariffs. Community energy also enables certain groups of household customers to participate in the electricity markets, who otherwise might not have been able to do so.

Adapting or re-creating business models according to a decentralised energy market and new stakeholder environments is a key challenge for the development of an innovative process towards the energy transition and climate neutrality in the urban context. Business models should be developed based on a life cycle assessment (LCA)<sup>11</sup> and provide flexibility regarding PED system boundaries. Applying LCA principles to the urban context has been explored in several studies (specifically regarding buildings and the construction sector)<sup>12</sup> and is still a challenging task, due to

- a lack of clearly defined sustainability indicators (environmental, social, economic);
- a lack of consensus in the definition of the city and its limits, which hinders the development of sustainability standards;<sup>1314</sup>

However, considering the comprehensive ambition of PEDs, designing innovative LCA-based business models is an imperative for bringing PED development forward. System boundaries in particular must be taken into account: similar to the need for getting to an understanding of cities as “functional units”, business models need to find solutions for both physical boundaries of PEDs and virtual boundaries, i.e. boundaries defined by contracting of energy supply from outside the physical boundaries of a PED.<sup>15</sup>

Projects are expected to consider the following aspects of this topic:

### **Design processes for mainstreaming PED in urban planning**

- Cooperate across departments within city administrations
- Decentralise decision-making such that it takes place at both city-wide and at neighbourhood levels

---

<sup>11</sup> For LCA definition by ISO, refer to: International Organization for Standardization (ISO), 2006: Environmental Management – Life Cycle Assessment - Principles and framework. European standard EN ISO 14040, Geneva.

<sup>12</sup> E.g.: Ylmén, P. et al (2019). Life Cycle Assessment of an Office Building Based on Site-Specific Data. In: *Energies* 2019/12 (MDPI).

<sup>13</sup> Albertí, J. et al, 2017: Towards life cycle sustainability assessment of cities. A review of background knowledge. *Science of The Total Environment*, Vol. 609, p. 1049 - 1063.

<sup>14</sup> See also: <https://www.esci.upf.edu/en/latest-news/news/application-of-life-cycle-assessment-towards-sustainable-cities>

<sup>15</sup> Virtual boundaries will most probably apply to most PEDs, as energy-self-sufficient entities without additional supply from the regional/national energy system will be very difficult to achieve, especially in existing neighbourhoods.

- Orientate general urban strategies towards climate neutrality and Smart Cities by mainstreaming energy planning and PED implementation in zoning and building codes

### **Design, demonstrate and disseminate processes for key stakeholders and public-private cooperation towards PED implementation in cities**

- Create strategies for local PED stakeholder ecosystems
- Set up cooperation between city administrations, real estate developers and utilities
- Involve SMEs
- Facilitate and coordinate public/citizen participation
- Set up Climate City Contracts<sup>16</sup>
- Define a citizen-centred proposal able to empower the energy rule in a wider social/ sustainable scenario.

### **Feasible and sustainable business models**

- Develop LCA-based business models, referring to different PED system boundaries (physical boundaries vs. virtual boundaries/integration in regional energy system), considering public interest and interests of different stakeholder groups
- Develop a CANVAS model approach for your PED
- Design a PED implementation proposal highlighting costs and revenues

<sup>16</sup> The Report of the Mission Board for climate-neutral and smart cities on Climate City Contracts:

“To address the challenge of climate neutrality and help better deliver EU policies, the Mission proposes a multi-level co-creation process through the introduction of a Climate City Contract. The purpose is to:

- a) express the ambition and commitment of all involved parties to the Mission objectives;
- b) identify the policy and implementation gaps as a basis for a strategy for transition;
- c) coordinate stakeholders and empower citizens in the city around a common climate goal;
- d) coordinate the national/regional and EU authorities to deliver the necessary legal, governance and financial framework conditions to support each city;
- e) create a one-stop-shop for multi-level negotiations to facilitate city action for transition.

Adapted to the specific circumstances of each city, a Climate City Contract will include the goal and targets, specify the strategy and the action plan for transition, and identify stakeholders and responsibilities. The Contract is not meant as a closed document that only binds a city legally to a course of action up to 2030. Instead, it emphasises the high ambition, the participatory approaches and the multi-level governance collaboration that will trigger innovation and change towards climate neutrality. The main idea is to create a demand-driven, live document that puts the cities at the centre of the transformation process and determines –in the form of local ecosystems –their scope, activities and timeline.” (European Commission, Directorate-General for Research and Innovation 2020. Proposed Mission: 100 Climate-neutral Cities by 2030 – by and for the Citizens. Report of the Mission Board for climate-neutral and smart cities. 11f.)



## 3 APPLICATION

Application for funding can be a lengthy, time-consuming process. Therefore, please read this document and all additional documents and available information thoroughly. If any question should arise, do not hesitate to contact the call secretariat or your national/regional agency.

Some requirements are common for all applicants and funding agencies. In addition to these general transnational requirements, there are specific funding agency rules that apply to applicants that claim funds from a specific funding agency (see chapter 6 for guidance and agency web links for further information).

### 3.1 Who Can Apply

Applicants are defined as organisations/institutions/companies that are eligible to receive funding from their respective funding agency<sup>17</sup> in this call. Every applicant nominates a principal investigator (PI) who is the lead investigator<sup>18</sup> for an applicant. Each PI may only participate in a maximum of two proposals, and only once as the PI of a main-applicant.

Depending on national eligibility rules (see chapter 6), applicants can be organisations from sectors/fields such as:

**PRC:** private sector (e.g. for-profit companies)

**REC:** research centres

**HES:** secondary or higher education (e.g. schools and universities)

**PUB:** public bodies (e.g. municipalities, regional/national administrative bodies)

**OTH:** other non-profit legal entities (e.g. NGOs, stakeholder associations, societies)

**Please check the national eligibility criteria in chapter 6 for more information about the specific rules and funding opportunities of respective funding agencies.**

Partners from other countries than the countries represented in this call and/or partners not eligible for funding may join projects either

- As co-operation partners
- May be eligible to receive funding from a national/regional agency; see chapter 6 for more information

As this is a transnational call, not only transnational rules apply, but also those set forth by the national/regional agencies and by national/regional laws and regulations. Applicants and consortia therefore must be eligible in accordance with the transnational and the applicable national criteria.

If funded, applicants will receive funding from their respective national/regional funding agencies in accordance with their respective national rules.

---

<sup>17</sup> Austria (FFG), Belgium / Brussels Capital Region (Innoviris), Denmark (Innofund), the Netherlands (RVO), Italy (MUR), Romania (UEFISCDI), Sweden (SWEA), Turkey (TÜBİTAK)

<sup>18</sup> Investigator does not necessarily refer to a person with an academic affiliation unless stated by the national criteria and regulations

These national eligibility criteria and rules for specific funding agencies can be found in chapter 6, which also contains links to the funding agencies websites. In the consortium, project partners and applicants can take one of three roles:

### **Applicant/Partner Roles**

The **main-applicant** and the **project coordinator** (PI of the main-applicant) will be responsible for running and managing the project. This entity will be the contact point for the Call Secretariat on behalf of the whole consortium and is responsible for the administrative management of the complete project. In addition, the project coordinator is responsible for leading the project activities in the own organisation. The project coordinator must be employed in one of the countries participating in this call. As noted above, the national eligibility criteria of the respective funding agency apply, please read these carefully in chapter 6.

A **co-applicant** is eligible for and applies for funding from one of the participating funding agencies. There may be more than one co-applicant from any of the participating countries in a consortium. The national eligibility criteria of the respective funding agency apply, please read these carefully in chapter 6.

While the main-applicant and the co-applicants receive funding from the agencies participating in the call, **co-operation partners** do not receive funding from a partaking agency (e.g. partners from countries not participating in this call, partners that are willing to participate with own funding, or are not eligible for funding). Co-operation partners can be included in the consortium if they finance their activity from other sources and the consortium in general fulfils the requirements on the number of applicants from participating countries.

Co-operation partners must be included in the proposal form and the financial sheet but may not claim costs and funding. Co-operation partners must not be invited via the online submission system as project partners (see section 3.3 for details) but a LOI must be uploaded.

### **Transnational eligibility criteria**

- Consortium as a whole must include
  - At least two eligible applicants from at least two of the different countries participating in the call.
  - At least one city, municipality or entity providing key urban services<sup>19</sup> for a city as an applicant (either main or co-applicant) or as co-operation partners.
- Project proposal consortia need to be balanced between countries both in terms of number of partners and distribution of budget. The share of personnel months applied for by applicants from one country must not exceed 70.00% of the total personnel month applied for by the consortium.
- Co-operation partners must provide a letter of intent, where they concretely state how they will be involved in the project and how they will profit and

---

<sup>19</sup> Key urban services include sanitation, energy, water, transport infrastructure and transportation, education, health services, emergency services and (public) housing

partake from/in project results. Please submit this LOI via the online submission system.

- Each PI may only participate in a maximum of two proposals, and only once as the PI of a main-applicant.
- Each proposal must nominate two experts for the Expert Support Facility of which one will be selected. Please use the work package 2 to describe and nominate the experts, upload their CVs in the online submission system as attachments and allocate two personnel months per expert for this task.
- Each expert may only be nominated in a maximum of two proposals.
- The participation of all partners involved must be convincingly justified in the project proposal.
- Consortia are required to prove the interest and active involvement of all partners in the consortium.

It is strongly recommended that these be checked with the contact person at the respective funding agency (see chapter 6 for the national contact point(s)) before submitting a proposal.

## 3.2 What Can Be Applied For

### Project duration

Projects may be funded for a period of **up to 3 years** (starting between July 2022 and October 2022). The earliest possible starting date may depend on the budget allocation (rules) of the specific funding agencies. The start and the end date of a project should be harmonised for all applicants in a consortium.

### Funding

The total available budget for this call is approximately EUR 7.85 million. Each national/regional funding agency will provide funds directly to their eligible beneficiaries in accordance to the agencies' rules and regulations.

There are no fixed minimum or maximum limits for a project size. Medium-sized projects with total budgets requested from the funding organisations in the range of 0.5-1 million Euros are typically expected which would allow for approximately eight to twelve projects to receive funding.

## 3.3 Preparing and Submitting an Application

### Language and form

Proposals must be prepared **in English using the designated proposal form**. Proposals written in other languages will be ineligible. The proposal form has to be completely filled. Incomplete proposal forms will be ineligible.

### Submission

Submission of a proposal must be done by means of the FFG online submission system (<https://ecall.ffg.at/Cockpit/Home?fid=42529808>). An online help document for

submission is provided via <https://ecall.ffg.at/Cockpit/Tutorial.aspx?target=6079134>. The proposal may only be submitted if all co-applicants have previously completed and submitted their partner proposals in eCall. Therefore, it is within the main applicant's duties to ensure timely submission of all partner proposals and of the proposal as a whole. The process of the invitation and application of project partners (co-applicants only, co-operation partners need not be invited or fill and submit a partner proposal) is described in detail in the section "Project Partners" of the above mentioned online help document. The terms "partner proposal" and "partner application" are used interchangeably. The "partner application" or "partner proposal" only includes the master data of the project partner and does not mean that the proposal must be submitted several times. However, both the "*Organisation / Master data*" section and the "*Projects / Project data*" section have to be completed by all project partners. It is not necessary to enter a staff pool or to create a master account (in the "*Organisation*" / "*User Management*" section in eCall) for the submission. Please note that the FFG online submission system generally does not allow changes to the proposal once you have submitted your proposal. Therefore, we kindly ask you to finalise your submission only when you are sure all content is ready for submission. It is not possible to resubmit or revise the proposal after the submission deadline. If you still have technical questions about the use of the system, please contact the Call Secretariat at FFG.

Please submit your full proposal via the online submission system and follow these general rules:

- The consortium and all applicants must be eligible according to the transnational, national and regional eligibility criteria (see chapter 6 and 3.1).
- Co-operation partners must not be included in the application as partners via the online submission system (see above for details) but must be listed in the financial sheet template and included in the proposal form.
- The application must be submitted
  - Completely (all mandatory documents and information)
  - Before February 24th 2022, 12:00 CET via the submission platform
  - Including the full proposal
  - Including the detailed cost
- The templates for the proposal (proposal form) and the detailed cost (financial sheet) must be used
- The research type (either "applied research" or "innovation / implementation") of each work package must always be indicated in the work package description in the proposal form.
- All submitted documents must be in English and must be in accordance with the guidelines and page limits stated within the template documents.
- Applications are considered final after submission. You may, however, retract an application.
- Applicants may not change their application after submission. The call secretariat may, however, ask applicants for further clarification or to correct obvious errors.

- All costs must be given in Euro. Please use the exchange rates stated in chapter 6.
- LOIs or CVs must be submitted via the online submission system
- National applications (for national rules see chapter 6) must be submitted on time and considered eligible.

**Data Protection**

The provisions of the General Data Protection Regulation (GDPR) shall be complied by the Call Secretariat and the funding agencies participating in the organisation of this call with respect to the processing of personal data.

Depending on the country and the participating funding agency, different national laws might apply and different online systems will be used regarding the processing of personal data.

Please note that by transmitting your proposal, the proposal will be forwarded to your responsible funding agency as well as to all other participating funding agencies involved in this call on Positive Energy Districts and Neighbourhoods and the Evaluation Panel members.

## 4 ASSESSMENT

Within the framework of this call, a one-stage procedure will be adopted:

After the submission, the Call Secretariat will **verify the eligibility** of the proposals according to the transnational eligibility criteria. The participating funding agencies will verify the suitability for national funding according to their respective eligibility criteria.

Both transnational and funding agencies' eligibility criteria must be met.

If either the Main Applicant or the proposal does not meet the eligibility requirements, the proposal will not be admitted to the evaluation procedure.

In case a single co-applicant is not eligible, the proposal may still be eligible without this partner if the eligibility criteria are met by the proposal. In both cases, this will be communicated to the Main Applicant.

If a proposal is "eligible", this does not mean that it will be awarded funding, but only that the proposal will be admitted to the evaluation procedure.

An **Expert Panel** composed of international experts and a chair will **assess** the eligible full proposals. The panel will consist of recognised experts in relevant fields, academics as well as practitioners and innovators, who can assess the scientific as well as the innovative and practical values of the submitted projects. The panel will be appointed by the participating funding organisations. The Expert Panel will assess the proposals using the evaluation criteria described in section 4.1. Applicants will have no possibility for rebuttal to the experts' evaluation.

Based on the ranking by the Expert Panel and taking into account the available (national) budgets, the participating funding agencies of the call will take funding decisions. Funding decisions are final and cannot be appealed.

The Call Secretariat will send a written statement on the evaluation of each full proposal to the Main Applicants. The Call Secretariat will inform the Main Applicants of projects that have been recommended for funding and on the subsequent contracting procedure.

Each project recommended for funding is required to have a **signed consortium agreement (CA)** between all partners prior to the start of the project, at least addressing the following topics:

- Internal organisation and management of the consortium
- Sharing of risks and results
- Dissemination of results
- Intellectual Property arrangements
- Settlement of internal disputes

Please note that national and regional funding agencies regulations concerning the requirement for a CA may apply.

The DESCA model may be a helpful starting point in designing the CA. Please note that the [DESCA model CA](#) is foreseen for H2020 projects with the EC acting as the sole funding agency. Thus, several of the paragraphs need to be adapted as "Positive

Energy Districts and Neighbourhoods for Climate Neutrality" Joint Call projects have different funding agencies for the respective project parts carried out in the different countries.

The procedure will roughly follow the following schedule

February 24th 2022, 12:00 CET	Deadline Submission of proposals
February 2022	Eligibility check
May 2022	Meeting of Expert Panel to assess full proposals
June 2022	Funding recommendation
June 2022	Announcement of results to Main Applicants
July 2022	Earliest start of projects

## 4.1 Evaluation Criteria

Proposals will be assessed according to specific evaluation criteria by using a common evaluation form. A scoring system from 0 to 5 will be used to evaluate the proposal's performance with respect to the different evaluation criteria. Evaluation scores will be awarded for each main criterion and not for the various sub-criteria. Significant weakness in a sub-criterion may however lead to a sub-threshold score in the respective main criterion if the Expert Panel deems the weakness to be a major threat to the implementation and success of the project.

For all proposals, each criterion will be scored by the Expert Panel, using the following scale:

**0: Failure.** The proposal fails to address the criterion in question, or cannot be judged because of missing or incomplete information.

**1: Poor.** The proposal shows serious weaknesses in relation to the criterion in question.

**2: Fair.** The proposal generally addresses the criterion, but there are significant weaknesses that need corrections.

**3: Good.** The proposal addresses the criterion in question well, but certain improvements are necessary.

**4: Very good.** The proposal addresses the criterion very well, but small improvements are possible.

**5: Excellent.** The proposal successfully addresses all aspects of the criterion in question.

Half marks can be used. The threshold for individual criteria will be 3. The overall threshold, applying to the sum of the three individual scores, will be 10.

The following criteria will be used to evaluate the proposals:

### **Excellence – Intellectual Merit (5 points)**

- Clarity and pertinence of the objectives (the project's objectives are clearly stated, coherent, and relevant)



- Appropriateness of conceptual approach (the project's concept and approach must be in line with the project's aims and objectives)
- Innovativeness of the approach compared to existing solutions (the project must have a novel approach, application and/or methodology, must significantly contribute to knowledge development and/or to the application and implementation of scientific and technological breakthroughs)
- Added value of transnational co-operation (the proposal must demonstrate how the dimension of transnational co-operation contributes to achieve more than otherwise possible: taking up, combining and integrating existing knowledge from different countries, cross-border exchange of knowledge and experiences, and cross-border application of [aptly modified] solutions)
- Feasibility of aims and objectives of project (the project's aims and objectives must be correlated with the planned outcome and impact of the project; the envisaged results must be realistically achievable within the project's budget and time allocation)
- Feasibility and suitability of project design and methods (the project's design and methods, including tools and technologies [where applicable], must be correlated with the planned outcome and impact of the project; the envisaged design and methods must be convincingly conceivable and executable within the project's budget and time allocation)
- Handling of development risks (the project's development risks must be clearly identified and appropriate preventive/remedial actions must be foreseen)

**Impact and User Engagement (societal and broader impacts of project results) (5 points)**

- Fit to aims and topics of the call text (see pp. 6-10 of the call text; the project's expected outcomes and impacts, set out in the project description, contribute to the scope of the call and one or more of the call topics)
- Integration of gender and diversity perspectives in the project plan and goals when applicable (gender- and diversity-specific topics are analysed adequately [where applicable] and integrated in the methodological approach of the project)
- Engagement of research users worldwide (e.g. communities, cities, policy makers, regulators, NGOs, or industry) and the extent to which the project is likely to be of value to end users (the project brings specified added value to a variety of specifically identified target groups in a transdisciplinary and transnational setting)
- Suitability of proposed arrangements for disseminating and communicating outcomes of the project (the project's communication and dissemination structure is in line with a transdisciplinary and transnational approach tackling the academic and non-academic target groups such as cities, civil society, NGOs and companies)
- Scalability and replicability of the solution (the planned project outputs and outcomes are likely to be scalable and replicable in other environments than the project's own one)
- Market potential of the project, capacity to respond to a demand or a need (the project enhances innovation capacity and integration of new knowledge meeting

the needs of communities, cities, policy makers, regulators, NGOs, and the international market by a challenge driven approach)

**Quality (Inter- disciplinarity and Personnel) and Efficiency of project implementation (5 points)**

- Value for money (the project planning is plausible and efficient in relation to the requested budget)
- Appropriateness of costing (the expenditures allocated to the various stages of the implementation of the project are adequate to the effective achievement of its goals and ambitions)
- Feasibility and appropriateness of timescale (the timescale is adequate to effectively achieve the project's goals and ambitions)
- Suitability of expertise, balance of substantial contributions of members to project consortium (the composition of the contributions and expertise of the consortium members is appropriate to the project's goals and ambitions)
- Composition of consortium compared to the topic's needs, transnational relevance and complementarities (the project partners encompass the diversity in skills, experience, knowledge and transnational relevance needed to achieving the project's goals and ambitions)
- Interdisciplinary, cross-sectorial collaboration, and co-creation (the project's implementation approach fosters interdisciplinary and cross-sectoral collaboration and co-creation)
- Adequateness of the work package structure and work plan (the structure and description of work packages is transparent and adequate according to the scope of work)
- Appropriateness of governance/management arrangements for project (the project's management system and procedures, including quality management, are adequate to the project's goals)
- Risk assessment, regulatory and ethics issues properly addressed (when necessary; the project's procedures regarding risk management and the management of regulatory and ethics issues are adequate to the project's goals)
- Other key expertise of consortium members (the key personnel shows the necessary experience and formal/informal qualifications to implement the project)

## **4.2 Conflicts of interest (Expert Panel)**

All necessary steps will be taken by the Call Secretariat to ensure no major conflict of interest by Expert Panel members occurs. The Expert Panel members will be required to formally declare that no conflict of interest exists at any time of their evaluation duty and will sign a confidentiality agreement concerning all documents and the entire process. In case of breaching the rule of no conflict of interest, means of reconciliation will be sought with the support of the Call Secretariat. In cases of a major conflict of interest that cannot be dealt with, the Expert Panel member will be discharged from participation in the evaluation process for the specific proposal, which is the subject of the conflict of interest. Projects that were assigned to the respective Expert Panel member will be assigned to another Expert Panel member.

The Call Secretariat will perform a first review of potential conflicts of interest before sending the proposals to the Expert Panel members. Expert Panel members are bound to indicate after receiving the proposals whether there is a conflict of interest with any of the researchers or research groups in the proposals for review. Expert Panel members will sign a formal declaration that they will not participate in the call nor have any conflicting interests regarding the researchers or research groups participating in the projects that they review.

## 5 IMPLEMENTATION

This call is part of the Joint Programming Initiative Urban Europe that includes various joint programme activities (e.g. knowledge sharing, networking) described in this section.

Projects funded via this call will become part of the programme of the JPI Urban Europe. Participants of projects funded via this call are expected to actively participate in the programme activities and to consider this in the planning of their project proposal by including budget to participate in the programme activities.

### 5.1 Data management

The JPI Urban Europe wishes to promote open, transparent and robust urban and global change research by encouraging more open sharing of research data, leading to wider data analysis, more data re-use, and the combination of datasets from multiple sources. The JPI Urban Europe believes that an increased emphasis on the open sharing of research data has the potential to stimulate new approaches to the collection, analysis, validation and management of data, and to the transparency of the research process. However, the JPI Urban Europe also recognizes that not all research data can be shared openly, and that there will be legitimate reasons to constrain access, for example the risks to the privacy of individuals must always be considered where data arise from, or are derived from, personally identifiable data.

The JPI Urban Europe considers that the production and implementation of a project specific data management plan is an essential requirement to enable the sharing of research data. Research data includes:

- digital information created directly from research activities such as experiments, analysis, surveys, measurements, instrumentation and observations;
- data resulting from automated or manual data reduction and analysis including the inputs and outputs of simulations and models.

Project-specific data management plans should be in accordance with relevant standards and community best practice, and which may vary by subject and disciplinary area. Research data should normally be open by default, unless there are legitimate reasons to constrain access, and the data must be made available with minimum time delay, including being discoverable through catalogues and search engines. Data with acknowledged long-term value should be preserved, protected from loss and remain accessible and usable for future research in sustainable and trustworthy repositories.

To enable research data to be discoverable and effectively re-used by others, including those outside the discipline of origin, sufficient metadata should be recorded and made openly available to enable other researchers to understand the research and re-use potential of the data. Published results should always include information on how to access the supporting data and other research materials. Researchers should ensure that metadata created to support research datasets retained for the long term is sufficient to allow other researchers a reasonable

understanding of those datasets and thereby minimise unintentional misuse, misinterpretation or confusion.

### **Data Management Plan Requirements**

A Data Management Plan (DMP) describes the data management life cycle for the data to be collected, processed and/or generated by a research project funded within this call. As part of making research data findable, accessible, interoperable and re-usable (FAIR), a DMP should include information on:

- the handling of research data during and after the end of the project;
- the types of data, samples, physical collections, software, curriculum materials, and other materials to be collected, processed and/or generated in the course of the project;
- the standards to be used for data and metadata format and content (where existing standards are absent or deemed inadequate, this should be documented along with proposed solutions or remedies);
- policies for broad access and sharing including provisions for appropriate protection of privacy, confidentiality, security, intellectual property, or other rights or requirements;
- policies and provisions for re-use, re-distribution, and the production of derivatives;
- plans for archiving data, samples, and other research products, and for preservation of access to them via an institutionally supported repository.

## **5.2 Project monitoring and reporting**

Project monitoring and reporting will be in accordance with the respective funding agency's rules.

In addition to the funding agency's requirements, the consortia are expected to deliver **progress reports to the Call Secretariat**, in English, on an **annual basis**, including a description of their transnational cooperation and a publishable summary of the project status. A reporting template will be provided on the programme website.

A **detailed survey** must be completed by the main applicant **at project start and together with the annual joint reports**. This survey includes key performance indicators for project progress and their contribution to the overall aim of the call. For project monitoring and reporting purposes, the JPI Urban Europe Online Project Monitoring System will be used.

Furthermore, one project observer from one of the participating funding organisations will be assigned to each of the funded projects to monitor the progress in transnational cooperation on behalf of the participating funding organisations and to provide a communication link between the project, the Call Secretariat, and the JPI Urban Europe.

**Therefore, time and budget should be reserved by the consortium as a whole for monitoring and reporting.**

## 5.3 Programme activities

To foster exchange between the projects, dissemination and communication to stakeholders, future PEDs, decision makers and the general public and to refine and identify challenges and objectives for future calls, the PED Programme Management has established a multi-layered scheme of mandatory activities, opportunities and support for projects.

### 5.3.1 Mandatory Project Events

Three project events are foreseen to foster exchange between all projects of this call. A project kick-off will be organised in 2022/23, a mid-term event in 2023/24 and a final event in 2024/25. Active participation of the funded projects is mandatory, e.g. by preparing short project presentations and/or posters.

**Therefore, time and budget should be reserved by the consortium as a whole for the project meetings.**

### 5.3.2 Reports and Summaries for the General Public

All consortia of funded projects are expected to prepare regular popular science summaries of the project contents and updates for programme activities and JPI Urban Europe publications (e.g. for brochures, (digital) newsletters, the website). Projects must ensure that all outcomes (e.g. publications) of transnational projects include a proper acknowledgement of JPI Urban Europe, the PED programme, and the respective funding agencies.

At the end of each project, projects are expected to submit an additional publishable report, meant for the general public. A template for this report will be provided by the Call Secretariat.

**Therefore, time and budget should be reserved by the consortium as a whole for these summaries, updates and reports.**

### 5.3.3 Expert Support Facility

Within this call, projects are asked to nominate two experts from different countries from their consortium to act as project ambassadors and experts for the PED Expert Support Facility. Two personnel months per expert should be reserved for this activity, their CVs uploaded and submitted via the online submission system and their expertise briefly described in the mandatory work package 2 in the proposal form.

One of the two experts nominated by a project finally receiving funding will be selected to take part in the Expert Support Facility. This selection process will be conducted shortly after the final project evaluation by the PED Programme

Management, together with the Expert Panel<sup>20</sup> Chair, - if needed - some additional Expert Panel members and the Call Steering Committee.

The budget reserved for the expert not invited to take part in the PED Expert Support Facility may be redistributed to other work packages and tasks depending on the specific funding agencies' rules.

The experts in the PED Expert Support Facility, together with the PED Programme Management, will work on one or more of the following topics and challenges:

- PED definition: system boundaries of PEDs, requirements for integration in regional/national/transnational energy systems, definition of consequences for energy policies (specifically the balancing of renewable energy on different spatial levels)
- Mapping of PEDs and establishing a database
- PED Toolbox: instruments for technical and social/governance issues, e.g. strategies for energy flexibility, qualitative and quantitative aspects or KPIs
- Explication of PEDs as building blocks for climate-neutral cities: how should roadmaps towards obtaining district level certifications look like?

**Therefore, two personnel months per expert nominated (4 personnel months per project in total) should be reserved for these activities.**

---

<sup>20</sup> Expert Panel as described in chapter 4



## 6 FUNDING AGENCIES' SPECIFIC RULES OF ELIGIBILITY, BUDGETS AND CONTACT DETAILS

### General information on the joint call

Updated information on this joint call and all relevant documents/templates are published on <https://jpi-urbaneurope.eu/calls/ped-call/>.

If you have questions on the **general call process and proposal submission**, please contact the Call Secretariat.

**Paul Kuttner**  
[paul.kuttner@ffg.at](mailto:paul.kuttner@ffg.at)  
+43 5 77 55 5069

**Johannes Bockstefl**  
[johannes.bockstefl@ffg.at](mailto:johannes.bockstefl@ffg.at)  
+43 5 77 55 5042

### Contact points of participating funding agencies

The tables below summarize specific funding agencies' rules, application procedure and the indicated budget of every participating agency. Additional information can be obtained by contacting the indicated national contact person(s).

<b>Country / Region</b>	<b>Austria</b>
Funding Agency	<b>FFG – Austrian Research Promotion Agency</b>
National contact person	<b>Paul Kuttner</b> <a href="mailto:paul.kuttner@ffg.at">paul.kuttner@ffg.at</a> +43 5 77 55 5069  <b>Johannes Bockstefl</b> <a href="mailto:johannes.bockstefl@ffg.at">johannes.bockstefl@ffg.at</a> +43 5 77 55 5042
National funding committed	1.5 M EUR
Estimated number of projects to be funded	5-7
Maximum funding per partner	0.3 M EUR
Maximum funding per project	0.3 M EUR
Funding rate	35-85% (see <a href="#">national guidelines</a> for details)
Who can apply (eligible entities)	PRC, REC, HES, PUB, OTH in accordance with the national guidelines
Types of research	Applied research (industrial research) and Innovation / Implementation (experimental development)
Eligible cost categories	Personnel, subcontracting, travel, R&D infrastructure/equipment, materials, services, overhead (fixed 25% flat rate for most cost categories) as stated in the national financial guidelines
Further restrictions and requirements	At least one PRC as co-applicant in the transnational consortium. A detailed list may be found in the documents at the national call website
Proposal submission at the national level	Mandatory national application via the eCall system to be submitted until <b>March 3<sup>rd</sup> 2022, 12:00 CET</b> . Details on the documents and information you need to submit may be found at the <a href="#">national call website</a>
National Reporting requirements	Annual financial and scientific reporting via the eCall system is mandatory. Please use the templates, which will be available on your project's eCall site once you initiate a reporting session.
Other	Austrian applicants should also consider the national sister programme " <a href="#">Stadt der Zukunft</a> ". We strongly recommend contacting the national contact persons during the preparation of the project.
Relevant national documents	Relevant national documents may be found at the <a href="#">national call website</a> .

<b>Country / Region</b>	<b>Belgium (Brussels Capital Region)</b>																							
Funding Agency	Innoviris- Brussels Institute for Research and Innovation																							
National contact person	Beata Bibrowska Senior Advisor-EU RDI programs E-mail: <a href="mailto:bbibrowska@innoviris.brussels">bbibrowska@innoviris.brussels</a> Tel +32 (0) 2 600 50 22																							
Funding committed	1M€																							
Estimated number of projects to be funded	2-4																							
Maximum funding per partner	N/A																							
Maximum funding per project	N/A																							
Funding rate	<table border="1"> <thead> <tr> <th></th><th colspan="4">Maximum funding rates</th></tr> </thead> <tbody> <tr> <td></td><td>Large enterprises</td><td>Medium size enterprises</td><td>Small enterprises</td><td>Research organisations, associations*, and administrations without economic activities</td></tr> <tr> <td>applied research</td><td>65%</td><td>75%</td><td>80%</td><td>100%</td></tr> <tr> <td>experimental research-innovation</td><td>40%</td><td>50%</td><td>60%</td><td>100%</td></tr> </tbody> </table> <p>-Eligibility of associations will be analysed by Innoviris. Therefore, every interested association must submit at Innoviris an official document called “declaration of activities». This document will be analysed and will allow to fix funding level of an association.</p> <p>-Regional administrations can be qualified of economic activity and therefore funded as private entity.</p>					Maximum funding rates					Large enterprises	Medium size enterprises	Small enterprises	Research organisations, associations*, and administrations without economic activities	applied research	65%	75%	80%	100%	experimental research-innovation	40%	50%	60%	100%
	Maximum funding rates																							
	Large enterprises	Medium size enterprises	Small enterprises	Research organisations, associations*, and administrations without economic activities																				
applied research	65%	75%	80%	100%																				
experimental research-innovation	40%	50%	60%	100%																				
Who can apply (eligible entities)	Innoviris can finance private and public enterprises, urban administrations, municipalities, associations, and research organisations.																							
Types of research	Applied research (industrial research) and innovation (experimental development)																							
Eligible cost categories	<b>Eligible costs-</b> salary (personnel costs), operational costs, investment costs, overhead, subcontracting.																							

	<p>Please refer to the financial guidelines of Innoviris funded projects- <a href="https://innoviris.brussels/documents/general-accounting-directives-2021">https://innoviris.brussels/documents/general-accounting-directives-2021</a></p>
Further restrictions and requirements	<p>1. At least one public actor from Brussels Region must be involved in the project (urban administration, energy operator, municipality, et.c) as an active actor</p> <p>2. Brussels entities competing to this call need to fulfil specific regional eligibility and funding criteria:</p> <ul style="list-style-type: none"> <li>– All applicants develop entirely or partially their activities in Brussels Capital Region,</li> <li>– They perform a research or innovation activity in the project</li> <li>– The project will be innovative and will present the positive impact on regional economy and employment by valorisation of results in the region</li> <li>– Applicants have not received public funding for the same activities</li> <li>– Applicants have fulfilled the obligations in the context of previous grants allocated by the Region</li> <li>– All applicants should demonstrate their viability and financial soundness regarding their own contribution to the project and the implementation of the results.</li> </ul> <p>To confirm eligibility or not of Brussels partners and proposals, Innoviris will analyse regional application forms before EU submission date.</p> <p><b>During preparation of the proposals, applicants will contact Innoviris and NCP in charge of this action. Innoviris offers the service of project preparation to ease regional submission of your project.</b></p>
Proposal submission at the national level	<p>Regional application form needs to be submitted by each individual partner to Innoviris by <b>10th February 2022</b>. The templates and instructions for regional submission can be found at <a href="http://www.innoviris.brussels">www.innoviris.brussels</a></p>
National Reporting requirements	<ul style="list-style-type: none"> <li>• Activity and financial reports must be submitted at least 1 per year.</li> <li>• Annual European consortium report will be sent to Innoviris</li> </ul> <p>Details of financial and activities reports can be found at <a href="http://www.innoviris.brussels">www.innoviris.brussels</a></p>

Relevant national documents	<p>Relevant regional information can be found at the <a href="http://www.innoviris.brussels">www.innoviris.brussels</a></p> <p>We are warmly inviting you to contact</p>

<b>Country / Region</b>	<b>Denmark</b>
Funding Agency	<b>IFD</b> – Innovation Fund Denmark
National contact person	<b>Martin Kyvsgaard</b> <a href="mailto:martin.kyvsgaard@innofond.dk">martin.kyvsgaard@innofond.dk</a> +45 6190 5081  <b>International Collaborations</b> <a href="mailto:internationale@innfond.dk">internationale@innfond.dk</a>
Funding committed	7,5 M DKK (1 M EUR, exchange rate 7,5)
Estimated number of projects to be funded	2-4
Maximum funding per partner	300.000 EUR including overhead
Maximum funding per project	500.000 EUR including overhead
Funding rate	See <a href="#">national guidelines</a> section 9 for details
Who can apply (eligible entities)	PRC, REC, HES, PUB, OTH in accordance with the <a href="#">national guidelines</a>
Types of research	industrial research and experimental development
Eligible cost categories	Personnel, subcontracting (national organisations), travel, equipment, materials, communication, other, overhead, investment as stated in the <a href="#">national financial guidelines</a>
Further restrictions and requirements	– <b>At least one Danish non-academia institution as co-applicant in the transnational consortium.</b>
Proposal submission at the national level	Mandatory to submit proposal and full-proposal via the <a href="#">E-grant</a> system Innovation Fund Denmark will automatically register the Danish partners who will receive a notification with more information from us when completed.
National Reporting requirements	Financial and progress reporting via the <a href="#">E-grant</a> system is mandatory. Please use the templates, which will be available on your projects site once you initiate a reporting session.
Other	We strongly recommend to contact the NCP during the preparation of the project.
Relevant national documents	Relevant national documents may be found at the <a href="#">national call website</a> and include: the <a href="#">national guidelines</a>

<b>Country/Region</b>	<b>Italy</b>
<b>Funding organisation</b>	MUR – Ministero dell’Università e della Ricerca
<b>National contact person</b>	<p>Aldo Covello  Email: <a href="mailto:aldo.covello@miur.it">aldo.covello@miur.it</a>  Tel.: +39 065849 6465</p> <p>Chiara Gliozzi  Email: <a href="mailto:chiara.gliozzi@miur.it">chiara.gliozzi@miur.it</a>  Tel.: +39 065849 7288  Website: <a href="http://www.ricercainternazionale.miur.it/">http://www.ricercainternazionale.miur.it/</a></p>
<b>Funding commitment</b>	600.000 €
<b>Maximum funding per awarded project</b>	200.000 € - this maximum grant can be awarded to each project proposal, even if it includes more than one Italian participant.
<b>Eligibility of a partner as a beneficiary institution</b>	<p>The following entities are eligible, providing that they have stable organization in Italy:</p> <ul style="list-style-type: none"> <li>– enterprises, universities, research institutions, research organizations in accordance with EU Reg. n. 651/2014 of the European Commission - June 17, 2014;</li> <li>– local and regional administrations and their investee companies (a more detailed description will be given in the Avviso integrativo nazionale)</li> </ul> <p>Any participant, in order to be eligible, must comply with the eligibility criteria listed in the art. 2.4 of the “Linee guida al DM 593/2016”.</p> <p>A Principal Investigator can participate (either as coordinator or as partner) in only one project proposal.</p>
<b>Eligibility of costs</b>	<p>All activities classifiable as Basic research, Industrial research and Experimental development are eligible for funding. Furthermore, Basic Research and Industrial research activities must be predominant with respect to Experimental development activities (in terms of costs). All costs incurred during the lifetime of the project under the following categories are eligible: Personnel, Equipment, Consulting and equivalent services, Consumables and Overheads. Overheads (“Spese generali”) shall be calculated as a percentage of the personnel costs and cannot be higher than 50% of them. Travel expenses, dissemination and coordination costs are to be included in the overheads.</p> <p>The amount of funding which can be granted to each beneficiary is calculated multiplying the eligible costs for the funding rate listed in the following table:</p>



	Activity typology		Funding Rates			
			Enterprises and private research bodies (which meets the requirements of research organization under EU Reg. no. 651/2014 of the Commission - June 17, 2014), and investee companies of local and regional administrations			Universities, public research institutions, research organizations (public and private) in accordance with Reg. EU n. 651/2014 of the Commission - June 17, 2014), local and regional administrations
			Small Enterprises	Medium Enterprises	Big Enterprises	
	Basic Research	grant	40%	30%	20%	70%
	Industrial Research	grant	40%	30%	20%	50%
	Experimental Development	grant	30%	20%	10%	25%
Submission of the proposal at the national level			<p><b>For the proposal submission</b>, in addition to the project proposal, which shall be submitted at European level, the Italian participants are requested to submit further documentation to MUR, through the national web platform, available at the following link:  <a href="https://banditransnazionali-miur.cineca.it">https://banditransnazionali-miur.cineca.it</a></p> <p><b>These national additional documents must be submitted by the same deadline established in the international joint call. Any participant who does not submit its national documents by the deadline will be considered not eligible for funding.</b></p> <p>More information on the national documentation to be submitted to MUR are available at the web page dedicated to the PED Call:  <a href="http://www.ricercainternazionale.miur.it/era/programmazi one-congiunta/jpi-urban-europe.aspx">http://www.ricercainternazionale.miur.it/era/programmazi one-congiunta/jpi-urban-europe.aspx</a></p> <p>It is strongly recommended to contact the National Contact Persons already in early stage of project preparation.</p>			
Submission of financial and progress reports at the national level			<p>The admission for funding is subject to the adoption of the necessary accounting and administrative measures for the allocation of the resources.</p> <p>Funded participants will be requested to submit financial and scientific reports to MUR.</p> <p>The criteria and provisions provided herewith are intended only for informative purposes. The complete list of criteria and provisions legally valid, which must be respected by all the Italian participants, is included in the “Avviso integrativo nazionale”, which will be published on the MUR website , and in the applicable Italian laws.</p> <p>Applicable laws and rules  <a href="http://www.ricercainternazionale.miur.it/evidenza/normativa-prog-internazionali.aspx">http://www.ricercainternazionale.miur.it/evidenza/normativa-prog-internazionali.aspx</a>):</p> <p>– Decreto legge n. 83/2012</p>			

	<ul style="list-style-type: none"> <li>– Decreto Ministeriale n. 593 del 26 luglio 2016</li> <li>– Linee guida al D.M. del 26 luglio 2016 n. 593</li> <li>– Procedure operative per il finanziamento dei progetti internazionali ex art. 18 D.M. del 26 luglio 2016 n. 593</li> </ul>
Information available at	<a href="http://www.ricercainternazionale.miur.it/era.aspx">http://www.ricercainternazionale.miur.it/era.aspx</a>
Other	<p>Name of the funding programme:</p> <p>FIRST (Fondo per gli Investimenti nella Ricerca Scientifica e Tecnologica)</p>

<b>Country / Region</b>	<b>Netherlands</b>
Funding Agency	Ministerie van Binnenlandse Zaken en Koninkrijksrelaties <i>Acting through</i> Rijksdienst voor ondernemend Nederland (RVO)
National contact person	<b>Dr Jacques T.N. Kimman</b> <a href="mailto:Jacques.kimman@rvo.nl">Jacques.kimman@rvo.nl</a>
Funding committed	1 M EUR
Estimated number of projects to be funded	4
Maximum funding per partner	-
Maximum funding per project	250.0000 EUR
Funding rate	<p>The relevant legal publication is § 4.2.18 ERA-NET energieprojecten (<a href="http://wetten.overheid.nl/BWBR0035474">http://wetten.overheid.nl/BWBR0035474</a>; use the left column to scroll to the right section; in Dutch). Maximum percentages of support for R&amp;D using the definitions laid down in the <a href="#">General Block Exemption Regulation</a> (GBER):</p> <ul style="list-style-type: none"> <li>- Research by Research and knowledge-dissemination organisations: up to a maximum of 80%</li> <li>- Industrial research: up to a maximum of 50%</li> <li>- Experimental development: up to a maximum of 25%</li> </ul> <p>On top of the above percentages for Industrial research and Experimental development, the following applies:</p> <ul style="list-style-type: none"> <li>- The aid intensity increase for small (+20 percent points) or medium (+10 percent points) enterprises, (Article 25, under 6, under a, of the GBER).</li> <li>- An aid intensity increase with another 10%, in case of effective collaboration between an undertaking and one or more research and knowledge-dissemination organisations, under the conditions mentioned in Article 25, under 6, under b i), second bullet, of the GBER.</li> </ul>
Who can apply (eligible entities)	<p>Definitions according to the guidelines laid down in the <a href="#">General Block Exemption Regulation</a> (GBER) on research, development and innovation.</p> <p>Senior researchers who are employed at Dutch universities, universities of applied sciences<sup>21</sup>, NWO-and KNAW-institutes, TO2 institutes may apply for funding and participate in the consortium.</p> <p>All other organisations are also eligible to participate and apply for funding. However, municipalities, provinces and</p>

<sup>21</sup> as referred to in Article 1.8 of the Higher Education and Scientific Research Act (WHW)

	<p>other public bodies can participate only as <i>self-funded</i> partners and will not be able to receive funding through the call.</p> <p>Municipalities, provinces and other public bodies are however a very important partner in the consortium and are therefore encouraged to participate. Depending on the kind of participation, this might have an effect on the subsidy of the other participants. Consult the national contact person in case of queries.</p>
Types of research	<ul style="list-style-type: none"> <li>- Industrial research</li> <li>- Experimental development.</li> </ul> <p>See European call text for the details.</p>
Eligible cost categories	<p>Project cost according to the guidelines laid down in the GBER and the “Kaderbesluit nationale EZK- en LNV-subsidies”; including personnel cost, cost of instruments and equipment, cost of buildings and land, cost for contractual research, knowledge and patents from outside sources, additional operating expenses, directly related to the project. See also <a href="http://www.rvo.nl/subsidiespelregels">www.rvo.nl/subsidiespelregels</a></p>
Further restrictions and requirements	<ul style="list-style-type: none"> <li>- At least 1 municipality or local authority from the Netherlands as self-funded partner in the transnational consortium OR co-applicants working in close cooperation with or on behalf of at least 1 municipality in the Netherlands in the transnational consortium as confirmed by additional documentation (e.g. support letter from municipality, but no contracting)</li> <li>- Participation of more than 1 municipality is strongly encouraged.</li> <li>- Involvement of stakeholders and end users is strongly encouraged.</li> </ul>
Proposal submission at the national level	<p>Subsidies will be granted using the general guidelines laid down in the <a href="#">Kaderbesluit nationale EZK- en LNV-subsidies</a> and the <a href="#">Regeling nationale EZK- en LNV-subsidies</a>, according to § 4.2.18 ERA-NET energieprojecten. Consult the national contact person in case of queries.</p> <p>National submission parallel to submission to PED-call submission, deadline 24 February 2022. A national application form and budget specification form need to be completed for the national part of the project.</p> <p>Submission procedure through E-loket.</p>
National Reporting requirements	<p>Yes, progress and financial reporting.</p>

Other	<p>We strongly recommend to contact the NCP during the preparation of the project.</p> <p>Furthermore, several events and information sessions regarding this call will be organised by Platform 31 See this link for the latest information: <a href="#"><u>Platform31 kennis- en netwerkorganisatie voor stad en regio - Positive Energy Districts (PED II)</u></a></p>
Relevant national documents	

<b>Country/Region</b>	<b>Romania</b>
Funding organisation	UEFISCDI (Executive Agency for Higher Education, Research, Development and Innovation Funding)
National contacts	Elena Simion E-mail: <a href="mailto:elena.simion@uefiscdi.ro">elena.simion@uefiscdi.ro</a> Tel.: +4021 307 19 93 Website: <a href="http://www.uefiscdi.gov.ro">www.uefiscdi.gov.ro</a>
Funding commitment	500.000 EUR (exchange rate: 5)
Anticipated number of projects with Romanian partners	2-3
Maximum funding per awarded project	250.000 EUR if Romanian coordinator 200.000 EUR otherwise
Types of research	UEFISCDI will fund fundamental research according to the national rules, applied/industrial research, experimental development implemented by research organisations and/or SMEs, according to the European State Aid legislation.
Eligibility of a partner as a beneficiary institution	Legal entities established in Romania are eligible to get funding - public and private accredited universities, national R&D institutes, other research organisations, SMEs, large industrial enterprises.
Eligibility of costs	Personnel costs, consumables, equipment, subcontracting, travel, overhead, according to the national rules that are currently pending approval from the Ministry of Research, Innovation and Digitalization and will be available on <a href="http://www.uefiscdi.gov.ro">www.uefiscdi.gov.ro</a> (P3 – European and international Cooperation). Please liaise to the national contact point for any further clarifications: Elena Simion E-mail: <a href="mailto:elena.simion@uefiscdi.ro">elena.simion@uefiscdi.ro</a> Tel.: +4021 307 19 93
Submission of the proposals at the national level	Not required
Submission of financial and progress reports at the national level	Yearly basis
Other	Additional documents might be required from Romanian participants for determining national eligibility after the submission of the project proposal.

<b>Country/Region</b>	<b>Sweden</b>
<b>Funding organisation</b>	Swedish Energy Agency (SWEA)
<b>National contact persons</b>	<p>Emina Pasic  E-mail: <a href="mailto:emina.pasic@swedishenergyagency.se">emina.pasic@swedishenergyagency.se</a>  Tel: +46 16 544 2189  Website: <a href="http://www.energimyndigheten.se">www.energimyndigheten.se</a></p> <p>Patrik Rydén  E-mail: <a href="mailto:patrik.ryden@viablecities.se">patrik.ryden@viablecities.se</a>  Tel.: +46 733 99 86 19  Website: <a href="http://www.viablecities.se">www.viablecities.se</a></p>
<b>Funding commitment</b>	1.5 M€
<b>Anticipated number of projects with Swedish partners</b>	Approx. 5- 8 projects
<b>Maximum funding per awarded project</b>	-
<b>Eligibility of a partner as a beneficiary institution</b>	All Swedish organisations (legal entity) are eligible for funding. (For example, public research organisations/institutions, cities/municipalities and civil sector can receive grants as well as large, medium sized and small enterprises).
<b>Eligibility of costs</b>	<p>The Swedish Energy Agency / Viable Cities welcomes projects related to all of the topics described in the call text.</p> <p>For information regarding eligible costs and the Swedish Energy Agency legislation see the Swedish national call text for Viable Cities: Positive Energy Districts via the link: <a href="http://www.energimyndigheten.se/utlysningar/">http://www.energimyndigheten.se/utlysningar/</a></p> <p>The proportion of a company's level of support is determined partly based on which research category the various activities in the project are deemed to correspond to and partly based on the size of the company in receipt of the support.</p>



	<p>Table. 1. Overview of maximum level of support - the actual rate of funding will be decided case by case.</p> <table><tr><th>Type of research and development</th><th>Non-economic actors*</th><th>Small company<sup>22</sup></th><th>Medium company</th><th>Big company</th></tr><tr><td>Fundamental research</td><td>100 %</td><td>100 %</td><td>100 %</td><td>100 %</td></tr><tr><td>Industrial research</td><td>100 %</td><td>70 %</td><td>60 %</td><td>50 %</td></tr><tr><td>Experimental development</td><td>100 %</td><td>45 %</td><td>35 %</td><td>25 %</td></tr></table> <p>*) For example universities, university colleges, research institutes and cities/municipalities (excluding their economic entities).</p> <p>Viable Cities criteria:</p> <ul style="list-style-type: none"><li>– Co-financing rate for innovation projects should be at least 50% of the total project costs.</li><li>– Co-financing rate for demonstration projects should be at least 75% of the total project costs.</li><li>– The project consortium shall consist of at least three independent organisations from at least two of the following stakeholder groups:<ul style="list-style-type: none"><li>○ (a) universities or research institutes;</li><li>○ (b) companies</li><li>○ (c) public sector</li><li>○ (d) civil society organisations</li></ul></li><li>– A PI of a Swedish applicant are expected to have an academic background</li></ul>	Type of research and development	Non-economic actors*	Small company <sup>22</sup>	Medium company	Big company	Fundamental research	100 %	100 %	100 %	100 %	Industrial research	100 %	70 %	60 %	50 %	Experimental development	100 %	45 %	35 %	25 %
Type of research and development	Non-economic actors*	Small company <sup>22</sup>	Medium company	Big company																	
Fundamental research	100 %	100 %	100 %	100 %																	
Industrial research	100 %	70 %	60 %	50 %																	
Experimental development	100 %	45 %	35 %	25 %																	
Submission of the proposal at the national level	Following the results of the international expert panel evaluation, the Swedish Principal investigators in the projects recommended for funding will be invited to submit a national application to SWEA (via Mina sidor). Information about the submission will be provided in the invitation and by the contact person.																				
Submission of financial and progress reports at the national level	Following the national project decision: one financial and one progress report annually will the funded projects submit to SWEA (Mina sidor)																				
Information available at	For full information see the Swedish national call information for this call at the webpages: <a href="http://www.energimyndigheten.se/utlysningar/">http://www.energimyndigheten.se/utlysningar/</a> <a href="http://www.swedishenergyagency.se">www.swedishenergyagency.se</a> <a href="http://www.viablecities.se">www.viablecities.se</a>																				

<sup>22</sup> The commissions directive (EU) nr 651/2014, appendix 1, article 2.

Other	<p>The Swedish Energy Agency is leading the energy transition into a modern and sustainable, fossil-free welfare society – applying our credibility, a comprehensive approach and courage.</p> <p>The Swedish Energy Agency funds research and innovation on new and renewable energy technologies, smart grids, vehicles and transport fuels of the future as well as smart, sustainable cities receives funding from us. We also support business development that allows commercialisation of energy-related innovations, and ensure that promising cleantech solutions can be exported.</p> <p>Viable Cities is a Swedish Strategic Innovation Programme with a focus on smart sustainable cities. The programme's mission is to speed up the transition to climate-neutral cities by 2030 with a good life for everyone within the planet's boundaries. The programme is supported by Vinnova, the Swedish Energy Agency and Formas, where the Swedish Energy Agency is the principal authority. The Viable Cities programme brings together about 70 members in business, academia, civil society and public organisations.</p>
-------	---

Country / Region	Turkey											
Funding Agency	TUBITAK – The Scientific and Technological Research Center of Turkey											
National contact person	<b>Mr. Çağrı YILDIRIM</b> <a href="mailto:cagri.yildirim@tubitak.gov.tr">cagri.yildirim@tubitak.gov.tr</a>  <b>Ms. Hanife TUZCUOĞLU</b> <a href="mailto:hanife.tuzcuoglu@tubitak.gov.tr">hanife.tuzcuoglu@tubitak.gov.tr</a>  <b>Mr. Ersin TURAN</b> <a href="mailto:ersin.turan@tubitak.gov.tr">ersin.turan@tubitak.gov.tr</a>											
National funding committed	7.5 M TRY (750.000 EUR, exchange rate 10)											
Estimated number of projects to be funded	4											
Maximum funding per partner	For higher education, training and research hospitals and public institutions and organizations; 720.000 TRY For private entities; 2.500.000 TRY											
Maximum funding per project	2.5 M TRY											
Funding rate	<table><tr><td>Type of activity/organisation</td><td>Large Enterprises</td><td>Small and Medium Enterprises</td><td>Universities and Research Institutes</td></tr><tr><td>ERANET ENPED</td><td>%60</td><td>%75</td><td>%100</td></tr></table>				Type of activity/organisation	Large Enterprises	Small and Medium Enterprises	Universities and Research Institutes	ERANET ENPED	%60	%75	%100
Type of activity/organisation	Large Enterprises	Small and Medium Enterprises	Universities and Research Institutes									
ERANET ENPED	%60	%75	%100									
Who can apply (eligible entities)	Calls are open for public institutions and private companies of all sizes as well as for universities and research institutes in Turkey.											
Types of research	applied research (industrial research) and innovation / implementation (experimental development)											
Eligible cost categories	<ul style="list-style-type: none"><li>– Personnel cost</li><li>– Travel costs</li><li>– Expenditures for Consumables</li><li>– Expenditures for instruments, equipment that would be used for R&amp;D purposes</li><li>– Expenditures for subcontracting and other services need for R&amp;D work</li></ul>											
Proposal submission at the national level	Applicants from Turkey would be supported via: <u>1071 Programme - Support Programme for Increasing Capacity to Benefit from International Research Funds and Participation in International R&amp;D Cooperation</u> The purpose of the 1071 programme is to support research and innovation activities of the Turkish stakeholders via enabling the cooperation of academy and industry for the international R&D projects.											
Other	For full information see the Turkish national call information for this call at the webpages:											

	<a href="https://www.tubitak.gov.tr/">https://www.tubitak.gov.tr/</a> <a href="https://ufukavrupa.org.tr/">https://ufukavrupa.org.tr/</a> <a href="https://uidb-pbs.tubitak.gov.tr">https://uidb-pbs.tubitak.gov.tr</a> We strongly recommend contacting the national contact persons during the preparation of the project.
Relevant national documents	Relevant national documents will be published at the <a href="#">national call website</a>